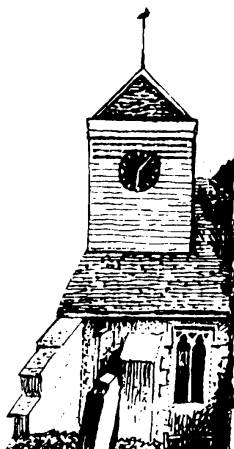


THE

PARISH



NEWS

**News from the Churches,
the clubs, groups and
societies of
Ninfield & Hooe**

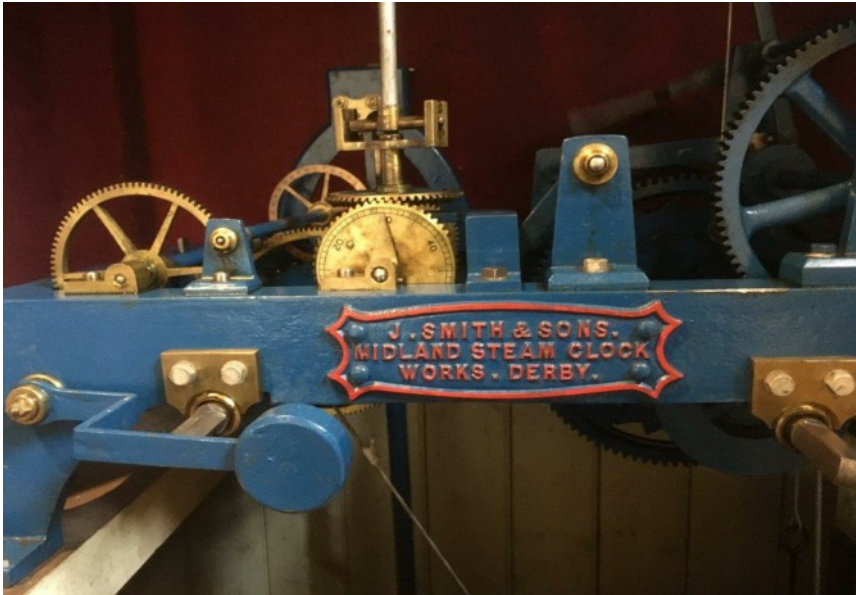
June 2020



St MARY's & St OSWALD's NOTICE BOARD CHURCH SERVICE TIMES



Village clock in St. Mary's church Circa 1898.
Paid for by public subscriptions, and still going strong.
Needs hand winding every three days.



APPOINTMENTS All enquiries about Baptism, Marriages or reading of Banns and concerning any other Church matters should be made to The Church Wardens, details on the back page

Any alterations or additions to these service times will be displayed on the church notice boards, the weekly sheet and can be found on the church website along with other church details ~ www.ninfield.org.uk

PARISH NEWS Views expressed in the articles in this magazine are those of the writer and not of the Parish Churches or PCCs unless it so states.
This publication is produced and distributed by Members of both Parish Churches.

Dear Friends,

In the days after the resurrection of Jesus, the disciples met behind locked doors “for fear of the Jews” and Jesus came and stood among them and said, “Peace be with you.”

Today, many of us are living almost “behind locked doors” _not “for fear of the Jews”, but for fear of Covid 19. _And that is bringing about a change in our ways of being and living which is almost as dramatic as the changes brought about to the early disciples by the resurrection of Jesus. For the early disciples, the changes in their lives were mainly long term. For us the changes may be temporary, but I suspect that for some of us certain aspects of these changes will continue throughout our lives

Just as Jesus came among those early disciples and said “Peace be with you”, so Jesus is alongside us saying just the same, “Peace be with you.” It is at times like this, that many of us want to think hard about our faith and about our priorities in life.

Our churches are closed and most of us are required to stay in our homes except for shopping and exercise and medical needs. This has had a number of implications, which for some can be quite positive, but which for others can be little less than horrific.

As individuals, we can't do many of the things which normally keep us busy. This gives us the opportunity to reassess what is really important in our lives. It is hard not being able to get out to see family and friends or to see the newly born grandchild; it is particularly hard for those living alone but many of us are being much more purposeful in making sure that we do keep in touch with those in our social circle using the phone, or WhatsApp, or Facetime or Zoom or other modern ways of communicating. Perhaps this reminds us that, in normal times, we can let other less important things get in the way of ensuring that we stay in touch with those close to us.

As a congregation, we have quickly had to create a new way of being the Church when we can't meet to worship together. I have provided a weekly Sunday service recorded and uploaded to YouTube with a delivery of a DVD for those not on the internet. Quite a challenge for me and certainly a learning curve in using technology!

We are learning a lot during this time, about ways of keeping in touch with one another – using some new ways and some old – and I am sure that some of these will continue to be used. The restrictions on the movement of all of us make us particularly conscious of those members of our congregations who are housebound. Do we do enough in normal times to keep in touch, to give them worship opportunities, to make sure that their needs are met?

This is also a time to concentrate on prayer – not only praying for those serving sacrificially in the NHS and care homes, for other key workers, for those who are suffering from Covid 19 and for the bereaved, but also just spending time focussing on the fact that Jesus is alongside us saying “Peace be with you.”

The lives of the early disciples were radically changed as a result of the resurrection of Jesus. The disciples had a new focus, to go and make disciples of all nations.

This pause in our normal way of being and living also gives us the opportunity to consider afresh how God wants us to be and to live both now, and when all this is over. Let’s not miss this opportunity!

Peace be with you.

Paul

St Sofa’s

By Nigel and Carol Beeton

We worship at St Sofa’s now

Since Covid came to stay

We don’t dress up or do our hair

But still we come to pray!

Our Vicar is a clever chap

A Zoom with his IT

And so we sit down ev’ry week

And meet up virtually!

Our Parish Church stands empty

With praise she does not ring;

But still her people gather round

To pray, and praise, and sing!

The virus is a nasty thing

Yet it has helped us see

The church is NOT a building

But folk like you and me!

NEWS FROM ST. OSWALD'S

This is by way of an update as to what has been happening at the church, in Hooe.

As you know, the Archbishops advised that all the Church of England churches would be closed for all services and for private prayer and the buildings locked on 24th March. This has been the case at both St Mary's, Ninfield and St Oswald's, Hooe. The Sunday services have continued by Rev. Paul Frostick recording the services at home and broadcasting them on YouTube, each Sunday. We are all very grateful to Paul and Eileen. It has been a lot of work and has been appreciated by many more people than the usual Sunday worshippers. He has also been delivering a DVD version to members of the congregation who do not have internet.

We can report that, in Hooe, the church building has been checked regularly, and all is well. We have been waiting for drier weather to begin work begin on relaying the path, from the car park gate, to the south door and hope this will start soon. Of course, the bell tower has been closed but we were able to ring one bell after the two minute silence on V. E. Day.

It does not look as if the churches will be open for Sunday services yet, but we do hope, that at St Oswald's, we may soon be able to open the building for parishioners to visit and to enjoy a few moments of peace and quiet. The social distancing and hand washing rules will apply. We are all aware of the difficult times that we are living through at present.

The July Garden Party is cancelled but other events will take place when restrictions allow.

In the meantime we wish everyone best wishes and good health.

Janet and Jack

Editors' Note We have missed putting the Parish News together but as with most things it had to be shelved because of the 'Lockdown'! however, a suggestion was made to put out an issue on the Internet. So here goes! The issue won't get to all the 420 households that we deliver to in Ninfield and Hooe but it would be nice if people who have a printer could perhaps pass a copy onto someone who is not on the internet. Obviously, the issue is different as we have no reports of meetings, clubs or societies and as there are no definite future events we cannot have the monthly diary.

Please share where you can and pass the link onto your friends and family in the two villages. The copy will be on the web site www.ninfield.org.uk which brings you to St. Mary's Ninfield and St. Oswald's Hooe and you click on Parish News and then click on June 2020. Having downloaded it you could always email a copy to friends!



We are slowly being released from Lockdown but we don't expect to have a printed issue for July but 'watch this space'

Nicki & Carol

Decorations
for VE Day
were put up
around the village
thanks to Sami
highlighting the
glorious
rhododendrons



“LOCKDOWN”

The Church door slammed on the emptied pews
The sanctuary lamp burnt out
The mice and bees live undisturbed,
No bells, no cup, no songs no bread, no Alleluiah shout
When Boris and the Bishops said
“We’ll put this plague to rout”

Outside the air is lambent clear
For smog and cars are gone
The bluebells, vetch and campion
Can feel and see the sun
Will we revert to cars and planes
When war on plague is won?

Some people, though, must find it hard
With roads so clear and silent
They’re banned because they’re old and grey
But gifts and shopping daily sent
By friends and neighbours , surely help
When “Stay at Home “ we’re meant

Of masks it proved there weren’t enough
As more sick souls arrived
Now Boris, too was sinking fast
So usual methods then were waived
To find a source of PPE
And Burberry contrived

Our luck will turn, as Edie* said
And love will see us through
Bert* says the trick is your belief
The rainbows’ messages are true
But if you’ve lost a good dear friend
Then prayers rain down on you.

*Edie and Bert aged 11 and 8 years respectively

Quinn's Carpentry

Bespoke carpentry to suit your needs

Tom Quinn

*Carpenter and Joiner,
20 years experience*



07515 907210 tomquinn1984@gmail.com

Experienced

HANDYMAN

**Painting, Plumbing, Gardening,
House Maintenance etc.**

Phone RICHARD

01424 272136 /

07980 933766

All jobs considered

Free Estimates

C & C Carpets

CARPETS - VINYL - TILES Etc

SUPPLIED AND FITTED

No Job too small

CLIVE SCOTT ☎01424 893209

BRIAN WICKENS PAINTERS & DECORATORS

Qualified Tradesman

Free Estimates No VAT

Home: 01424 224328

Mobile: 07803 095061



Hire local portable toilets for all occasions

Please contact us for further details

info@meridiantoilethire.com

We conform to all Health & Safety standards



☎ 01424 892257

info@haffendenroofing.co.uk

www.haffendenroofing.co.uk

Gentle Sole Foot Therapy

Foot Care in Your Own Home

- including routine Diabetic foot and nail care

Julia Stickells

Foot Health Practitioner

SAC Dip FHP-, SAC Dip-F-IPP, MRFHP

Mob: 07512 118650

Web: gentlesole1066.co.uk

Email: gentlesole1066@gmail.com



**EAST SUSSEX
OSTEOPATHS**
TREATING THE WIDER FAMILY

Registered with the General Osteopathic
Council and the Institute of Osteopathy,

East Sussex Osteopaths offer clinic

appointments in Dallington & Heathfield.

To book an appointment, 07762 576 492

www.eastsussex-osteopaths.co.uk

Calls for complementary advice also welcome

OUR SCHOOL

Well my “Will we, won’t we?” question was answered and the answer was ‘we will’. On Wednesday 18th March we learned, by watching the telly, that we had to close the school on the Friday. Although we weren’t to close it completely as we were to remain open for the children of key workers, the list of which would be available sometime on Thursday. All helpful stuff!

When the list of key workers was eventually published we estimated that we would have more than 90 children in school if we followed the guidance of taking children from families where one parent is a key worker. This would have made a nonsense of the reason for closure. So in the end, along with our other local schools, we agreed that we would open for the children of families where both parents are key workers. So after two hectic days the school closed it’s doors on Friday at 3.30pm.

Monday morning arrived and we had 25 children in school. Teachers were busy uploading work to the new web site for those now at home and also working out creative ways to keep little minds occupied and engaged.

Although it was a very difficult time for everyone involved I was impressed by the commitment and the attitude of everyone, staff and parents alike. In a couple of short days we had gone from a busy village school to a quiet, empty set of classrooms. Meanwhile parents were left to juggle child care, working from home and bored children. I think everyone deserves a big pat on the back for their dedication, patience and understanding.

Numbers have fluctuated over the weeks with the smallest numbers during the Easter break. Staff have adapted to new ways of working, technology has become increasingly important and thankfully the sun has been shining. We seem to have got into a settled routine which is not ideal, but does the best that we can in the circumstances.

Then came the next bombshell. On Sunday 10th May we learned, by watching the telly, that we would be partially re-opening on 1st June. It had been decreed that Reception, Year 1 and Year 6 would be

returning to school. Oh and some guidance on exactly how we do that will follow soon. Cart before Horse seems to come to mind with all these announcements.

So now everyone is working hard to understand how you get reception children to socially isolate, how we manage with classes of only 15, how we organise a one way system in the corridors and how we keep everyone safe. To add insult to injury Staff have been told that it is safe to work at school, without PPE, yet parents have been told they won't get fined if they don't send their children in because they feel it is unsafe to do so. Not sure about the logic of all of that but I'm sure we will come up with something.

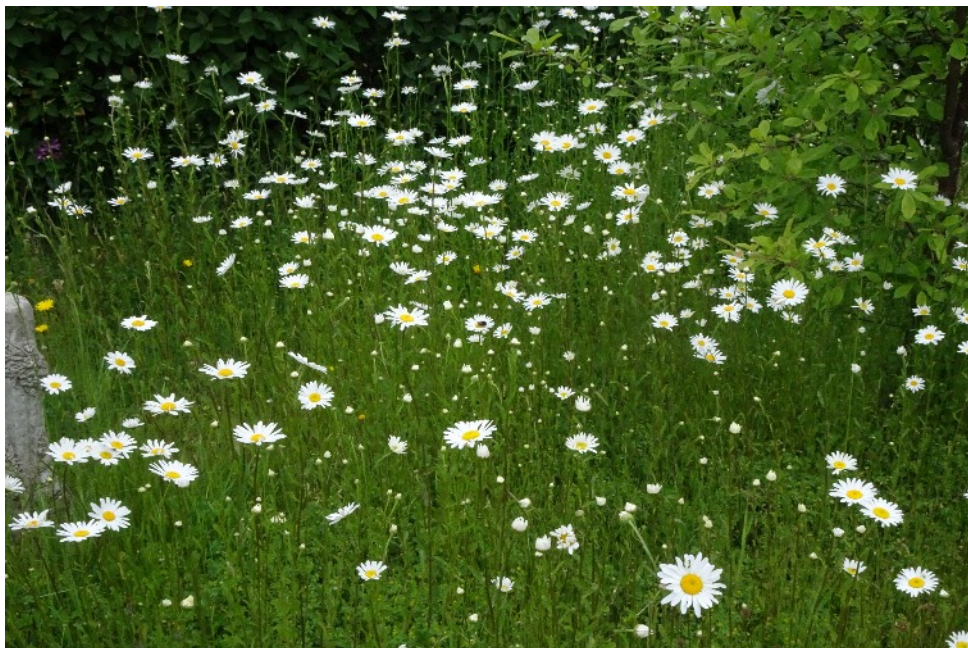
In the meantime we are all watching the telly continuously just in case we get told something else we have to do.

All good fun. Stay safe

Ian Moffat

Our lovely view from Upper Church path





**Small wild flower meadow
Filled with oxeye daisies**

Sussex Wildlife Control

For a fast, friendly and discreet service

- Ants
- Bed Bugs
- Bird Control
- Carpet Beetles
- Cockroaches
- Fleas
- Fly Control
- Mice
- Moths
- Rats
- Rabbits
- Squirrels
- Wasps
- Moles & More

Call Now

07505 864 063

Domestic and commercial
pest control

**DANCE CLASSES
'MOVEMENT 2 MUSIC'**

For the Older & Still Active Person
Every Mondays 10.00 am

LADIES DANCERCISE

Every Tuesday evening 8.00 pm

'BURLESQUE!'

Fortnightly, Friday evenings 7.00 pm

All classes at the MEMORIAL HALL

Fully Qualified Professional Teacher

Call : SAMANTHA GUARD A.I.S.T.D.Hons.
01424 893699 or 07970 650321



**HOPE COTTAGE
FARM SHOP & TEAROOM**

Hooe Road, Ninfield, TN33 9EL, 01424 892342

Breakfasts served all day

Lunches, specials, High Teas, cakes,
desserts

Roasts on a Sunday

Hampers, Gift Ideas & Vouchers

Mon to Sat 9am-5.00pm ~ Sun 10am-4pm

NINFIELD VILLAGE SOCIETY

Like most organizations we have had to curtail our operations during the restriction's imposed during the coronavirus pandemic. Thankfully these restrictions are now slowly being eased and we hope it will not be too long before we can continue fully with our works both in Church Wood and around the village.

Many of you will already know that, on behalf of our Parish Council, the Society volunteers and members have been responsible for the management and maintenance of Church Wood since it was gifted to the village some twenty five years ago. Here I wish to pay tribute to all the other volunteers past and present who have given so much time and effort in shaping our wood into what it currently is, not forgetting other local organisations and individuals such as scouts, beavers, brownies, schoolchildren who have planted trees etc. . Also thanks to the individuals and organisations who have supported us financially.

We have noticed that during the recent weeks of lockdown there has been a sharp increase in the number of people visiting Church Wood, many discovering its delights and benefits for the first time.

The very many health giving benefits of taking time to spend in woodland are becoming much more widely known and understood, for example have you heard of forest bathing or shinrin-yoku ? (look it up). So we are particularly blessed at this time to have access to our own gem of semi natural ancient woodland with its three ponds to enjoy. I like to think of it as our OASIS at the heart of the village.

Following our suggestion our Parish Council are now actively persuing the possibility of having Church Wood designated as a Local Nature Reserve. To do this a formal procedure needs to be followed, which can take several years to complete. It is hoped that by gaining this status for the wood that a more secure, diverse and planned future for it is put into place.

For more information about the Society and its aims, volunteering or membership, or more about Church Wood, contact: Robin Goldsmith 892778 or Mob. 07940 324601 Treasurer/ temporary secretary

HOOE HISTORY SOCIETY

At the beginning of the coronavirus outbreak the HHS committee took the decision to cancel, in the first place, the three following meetings:-

16th April, Deborah Bedford JP DL - The History of the post of Lord Lieutenant;

21st May, Jan Black - Historic Sussex Food from 1600's to 1900 (with tasters!);

18th June, Brian Freeland – Sussex lives from John Freeland to Rudyard Kipling;

We are inviting these three speakers back to hopefully give their talks next year.

We will, of course, comply with all directives and advice issued by the Government and Wealden and to that end it is my belief is that we almost certainly will need to extend this suspension beyond June and I will confirm this as more information becomes available.

We have circulated our members to ask if any of them wish to create a record of their experiences, thoughts, day to day routines, things they have done differently, photos even – perhaps we can pull them together as a historical record of the year. After all, it is history in the making. This invitation is open to anybody in the village, of course, if you wish to share your experiences with us. Please see our website for contact details – hooehistory.wordpress.com

DID YOU KNOW that in the years following the global pandemics of 1899-90 (Russian or Asian flu) and 1918 (Spanish flu) Hooe experienced slightly higher numbers of burials than average. The number went up in 1890 from an average of just over 5, to 11 then back down again. Similarly, in 1919, the number spiked (again at 11) from an average of just 3 per year, before falling away in the years to follow. Nothing conclusive there, of course, but it does indicate that we all must remain very careful, even here in the beautiful countryside. Stay safe, keep well.

Adam and Eve

Adam and Eve had an ideal marriage. He didn't have to hear about all the men she could have married, and she didn't have to hear about the way his mother cooked.

NEWSLETTER JUNE 2020 FROM BEXHILL GP PRACTICES

This month we want to explain to our readers about what we as a surgery are doing to keep everyone as safe as possible during the current pandemic. You may have already noticed that we have had a buzzer system installed on the door; this is to help our reception team to ensure people are only coming into the surgery if they have a prebooked appointment. You'll be asked to sanitise your hands before entering, and reception staff are now checking everyone's temperature on entering the building using a contactless thermometer (yes, that includes us staff members also). We are ensuring that the waiting room only has one patient in it at a time, so this means you may be asked to wait outside/in the car if you do arrive before your appointment time. If you need to collect medication only, then please press the buzzer and then wait by the medication collection point window. We should also be able to take card payments in the near future (finally!).

Phlebotomists and healthcare assistants have a ten minute gap between consultations so they can clean down the room and door handles thoroughly between each patient. The nurses and doctors are doing the same, but we are also trying to use telephone and video consultations where possible to minimise numbers of people coming in (when phone signal allows!). Of course, if you do need to be seen we will always facilitate this. We are wearing masks and gloves for every consultation. As the government guidance has recently changed to ask people to wear face coverings in enclosed public spaces, we do ask people to consider this, especially if you have an appointment where 2 metre distancing is not possible (for example, a blood test). This government website gives information about how to make something suitable if you're feeling crafty!

<https://www.gov.uk/government/publications/how-to-wear-and-make-a-cloth-face-covering/how-to-wear-and-make-a-cloth-face-covering>

WE ARE NOT SEEING ANYONE WITH SYMPTOMS SUGGESTIVE OF COVID-19 AT NINFIELD SURGERY. I think this is really important to emphasise, as we have had some patients very concerned about

coming in to the surgery and avoiding seeing us, when they really need to. If you have symptoms suggestive of COVID-19 that you feel you cannot safely manage alone at home, please contact us as usual. After we have assessed you via phone or video call, we will liaise with a hub that has PPE and an appointment will be made for you to be seen there.

Finally, as lockdown measures start to ease please do remember to maintain social distancing, sanitise hands frequently and to self isolate as per the government advice if you develop fever, cough and/or a loss of smell or taste. That advice is unlikely to change for the foreseeable future. Thank you for helping to reduce the burden on the surgery locally and the NHS as a whole in doing so.

Thank you for your understanding



Orchid growing in Manchester Road

Algae growing on Robin's Pool, in Church Wood




PARKER & SON

BUILDING, ROOFING & SURVEYING

Building the future and restoring the past since 1929
NEW BUILDS - ALTERATIONS & CONVERSIONS
RESTORATIONS - EXTENSIONS - GROUND WORKS
BATHROOMS & KITCHENS - GARAGES - ROOFING SERVICES
- SURVEYING- LISTED PROPERTIES - COMMERCIAL
01424 892933


Info@parkerandsonconstruction.co.uk
www.parkerandsonconstruction.co.uk



Are You Legal in 2020?

Did You Know? As of January 2020 the regulations surrounding the disposal of rural sewage change. You are now NOT allowed to discharge your septic tank directly into the environment.

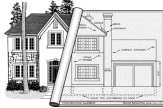
For further information and advice contact the experts:
Email: info@sussexwaterdrainage.com Tel: 01435 830220



ELM ARCHITECTURAL SERVICES

New building ~ Conversions
Extensions ~ Garages
Drawings prepared & submitted to
Local Authority for Planning and/or
Building Regulation approval

Pete Holland
01424 893326
07879 898772



FULLERS ROOFING (Sussex) Ltd

Well Established Ninfield Firm
All types of roofing & building works
Proud Member of Check A Trade.com
01424 810417 or 07812194145

Find us at
www.fullersroofing.co.uk
Email: info@fullersroofing.co.uk

ASTBURY

Windows, Doors
& Conservatories

Tel: 01424 893820
Mobile: 07740 877422

Email: info@astburywindows.com
www.astburywindows.com

Mrs. M. Keeley
M.C.HP. M.A.F.HP

*Foot Health Home Visiting Service,
Nail Cutting, Corns, Calluses*

Tel: 01424 892120



JBN BUILDING

Restore-Build-Maintain

All aspects of building work undertaken, covering all trades.
Free estimates and friendly advice.

Call John **07725752927**

Email: info@jbnbuilding.co.uk www.jbnbuilding.co.uk
Established and based in East Sussex since 2009.

Hydra

Window Cleaning



James Parris hydracleaning@mail.com

07515460008 hydracleaning.co.uk

A few items of News, some Views and 'Revue's'

- with love from Sami !

Strange times call for strange measures! And, these are VERY strange times! How odd it feels to stand 2 metres apart from people, to queue quietly outside shops, to do...basically not a lot! Except cleaning. I've found corners of my house that I haven't seen for years, and that's not an admission of slovenliness, just a realisation that working at 100 miles an hour for the last few years has somewhat curtailed the Mrs Beeton Standard of House-Proudness!! So, the clear-out, clean and create streak in my nature has been reignited, and has provided some much needed exercise to boot. I am SO missing my lovely Movement 2 Music classes, that were taking off beautifully in the Memorial Hall, just before the lockdown, and having lost ALL 5 venues, plus the Ladies Dancercise and Burlesque classes too...well, the waistline has increased somewhat, with only the online Palladium Generation Dance class, and Mr Motivator in the mornings..plus the continual housework, to keep the poor old body going!

But, the writing is happening! Our 'Deja Revue' shows are gaining material on a daily basis; there is SO much comedy gold out there on social media at the moment! - so the Gala Night, with Fish & Chip Supper, that is booked for Saturday 14th November, in the Memorial Hall - will be the perfect opportunity for people to come together, safely, relax a little, and have a laugh at what all seems slightly surreal now. AND! The Script for "Cinderella, Belle and a Right Royal Muddle...the Magical Adventures of Pantoland!" is near completion-with the current Covid circumstances again creating comedic ammunition - and I thought I only had Brexit to play with...!.. And presenting the Show, in December, at the Hall, is still the target for the end of the year, followed by the New Year's Eve party! Both Shows are conditional to 'All Phases of Easing Permitting'!

Funding the Pantomime was due to be made by the 'An Evening with...' Show in May - which of course had to be postponed. It is now booked to go ahead on Saturday 29th August, Bank Holiday Saturday, same time, same place and same menu for a fabulous fun evening of stories, gossip and lots of laughs! Posters will be adapted and put up

at the end of July... Again - As long as Phases 2 and 3 go according to plan!!

However- before August comes June and July - and I'm afraid, after a definitive decision by the Carnival Committee, by email this week, we have made what is an unhappy, but hardly unsurprising call to CANCEL the Summer Solstice weekend on 20th/21st June - and, even though all weekends are free in July, it would NOT be sensible to try and second guess the situation and put a Carnival on then. So- we on the Carnival Co. hope for the Winter Solstice, Sunday 20th December, to put on something sparkly and lovely, and I'm sure there will be an opportunity in the Autumn to have some sort of impromptu get together. Watch this Space, Hold your Breath and Cross all Fingers and Toes!!!!

And- look out for any announcements on Fresh Air Fitness on the Recreation Ground! As soon as it becomes clear as to when a group of people can, while socially distancing, exercise together in the outdoors - I will be there with bells on and hope you'll join me!!

In the meantime- stay well, stay safe, stay alert - and stay in touch!!!
See you soon! x

BOOK EXCHANGE CAFÉ

Greetings from all the volunteers at the Book Exchange Café! No doubt like us you are missing the opportunity to swap books and enjoy a chat with others.

I don't know about you, but apart from a stock of books I had ready to read, I have had to dip into our bookshelves and done some re-reading of favourite novels. One such title was 'Sweet Tooth' by Ian McEwan. He is a great writer and the plot of this book concerns espionage, deceit and love. It is a real page-turner. Just now I'm reading Joanne Harris' 'Blue Eyed Boy' which is fascinating. She also wrote the book 'Chocolat' which was made into a very good film starring Julia Roberts.

Whatever you are reading, we hope you continue to enjoy this pastime which gives all of us so much enjoyment. Happy Reading, stay safe and keep well.

David Swales

H OGS Hooe Open Group

2020 started in January with the news that our chairman Edna Wallis had decided to retire. Although sad to hear her news, we could understand that after 13 years she felt it time to step down. After some discussion Heather Sinden and Nicki Murphy offered to continue Hooe Open Group for 6 months. If after that, the membership wish to continue the meetings, a committee would be needed to share the smooth running of the group.

February we had an amusing and enthusiastic talk given by Anne Bourner on her life as 'Sussex born and bred'. March, Jennifer Collett showed us how easy flower arranging can be when you 'know how'. The beautiful arrangements were raffled and four lucky members went home with one each.

Since March like all clubs and associations locally and in the country, due to coronavirus and Government directives, we have cancel all arrangements until further notice. If however the 'lock down' on gatherings is lifted by September, Daryl Holter will be willing to come to our meeting and talk to us.

In the meantime I hope everyone has made the most of your time at home, and able to do the things and jobs we keep putting off because of 'lack of time'.

We are most fortunate to have gardens and many footpaths to walk which enable us to get fresh air without coming into contact with too many other people. The daffodils have been a joy to see, followed by bluebells which have been wonderful. The lovely sunshine has helped, but I do count my blessing to live in such a beautiful part of the country.

I trust everyone is heeding the Government rules of safe distancing and only going out when really necessary, this seems the best way to stay well.

Our best wishes to you all and hope it will not be to long before we are able to meet up once again. Nicki and Heather

N INFIELD HEALTH WALKS

Whilst our local ESCC walking for health group has been suspended because of the present Corona virus restrictions there may be some who would like to know the route of an easy one hour stroll on good surfaces that avoids gates and stiles.

This is our standby all weather route, but please be aware that as it uses minor Roads and lanes a careful watch has to be kept for traffic.

Suggested start point is from Sparke Pavilion.

Proceed south down church lane, turn right and go through the church yard.

Exit churchyard via small white gate, keep right along upper Church path to its end.

Cross the main road at the zebra crossing, then cross The Blacksmiths car park.

Cross straight over Manchester road then proceed down Moons Hill and on to the tee junction.

Turn left onto Marl pits* Lane and proceed to its end at the junction with Manchester road. There are nice views on your right.

Turn left and go along Manchester road until you arrive back at The Blacksmiths.

Cross the main road and retrace your outward route along the footpath, pausing to take in the wonderful view across Pevensey Levels.

Go left through the white gate and churchyard out into Church Lane.

Turn left and arrive back at the start point.

An optional add on for the more adventurous: Has steps, stile and uneven surfaces

Approximately 400 yards along Marl pits lane there are some white tubular railings on your right. Immediately take the steep steps down onto the footpath known as Blind Hollow and follow this path right to its end. Turn left and go up Coombe Lane to its junction with Manchester road. Turn left then ignoring the next left turn, keep straight on Manchester road to The Blacksmiths. Follow the remainder of the route as above.

* Marl is an unconsolidated sedimentary rock or soil consisting of clay and lime, formerly used as fertilizer also in the making of bricks and tiles.

Article by Robin Goldsmith, one of the local health walk leaders.
Contact No. 01424 892778

NINFIELD VILLAGE MEMORIAL HALL

I hope everyone is well and staying safe .

When I was asked to write a piece for the Parish Mag, I thought what can I write as the Hall has been closed since March. Well we had to shut the Hall and it will probably remain shut until the end of July. We are looking to re-open in August as long as the Government guidelines allow us to and it's safe to do so.

We have been working behind the scenes with new LED dimmable lights being fitted in the hall along with a new boiler thermostat as well as new plugs and sockets on the stage.

The hall will be undergoing a clear out and a major deep clean and sanitization during June ready for re-opening.

We have a new committee member who will be joining us at our next meeting and she is keen to help wherever is needed.

Our Lottery bid is sadly on hold but we are hoping for a decision sometime in October, fingers are still crossed for a 'yes'.

Well there's not much more that I can say, except I'm enjoying the glorious weather and gardening time.

Ninfield is such a lovely village and everyone is happy to help anyone. If you do need help with anything do contact the Parish Clerk as she has a list of volunteers and if we can, we at the Hall will be happy to help. Just email ninfieldmemorialhall@gmail.co.uk

Take care everyone

Chrissy, Chair Ninfield Memorial Hall

Love in a bag

I asked my nephew whether he bought his wife anything for Valentine's Day, and he said he had bought her a belt and a bag. When I commented that I am sure she would appreciate them, he agreed: "Yes, and hopefully the vacuum cleaner will WORK better now."

JOHN BIGNELL
Garage Doors

Automation / Repairs / New Doors

01424 210522

johnbignell@btconnect.com

2 Course Lunch

£9.75

Inclusive of Coffee

The Richmond Luncheon Club

Serving every Monday

Please call us for more details

Advance Orders essential

01424 212836

The Richmond Restaurant

The Northern Hotel

Sea Road, Bexhill on Sea - TN40 1JN

BLACKSMITHS INN

To book 893875
Weekly Specials

TAKE-AWAY MENU

Pie, chips & peas

Burger & Chips

Fish, chips & mushy peas

Veg lasagne & garlic bread

All £10. Tues/sat 12-3, 6-9

Roast dinners Sundays 12-6 £10

Desserts Banoffee/Apple pie £3.50

TABLE TENNIS

THURSDAY EVENINGS

7.15 - 8.30

ALL AGES AND ABILITIES

GET ACTIVE

Just turn up

£4

BATTLE SPORTS CENTRE



Gas Boiler Servicing
from £60+VAT

Oil Boiler Servicing
from £80+VAT

Gas Safety Certificate
from £49.50+VAT

Boiler Installation & Servicing

Including landlord gas safety certificates

General Plumbing & Heating Services

Underfloor Heating

Kitchen & Bathroom Installations

Honest, Professional & Affordable



Constructionline

01424 892933



info@pandsplumbing.co.uk | www.pandsplumbing.co.uk

Clifford



Upholstery

Professional upholsterer with over 25 year experience in modern and traditional upholstery methods.

Re-upholstery & recovering, Cushion making

Bespoke furniture, Repairs & Modifications

Headboards & plywood curtain pelmets

Upholstery tuition

07943 008 739 / paul@cliffordupholstery.co.uk

for a quote or to discuss your requirements.

SUSSEX SECRETARIES



**DO YOU NEED HELP
FOR YOUR BUSINESS
OR IN YOUR HOME?**

**Call us to discuss
how we can help**

01424 892463 07940 886123

www.sussexsecretaries.co.uk

EMMA TELFORD

Mobile Hairdresser

**All hairdressing services in your
own home.**

**Please phone for an appointment
or with any enquiries**

07812 375158

Balaenoptera physalus

Normans Bay railway station is on the East Coastway Line, and train services are provided by Southern. The station was opened on 11 September 1905 and was originally named Pevensey Sluice, but later that year it was renamed Normans Bay Halt. The name was altered to Normans Bay on 5 May 1969.



But many do not know the reason why there is a station there, and it all dates back to 8pm on Monday 13th November 1865, when William Richards, the Coastguardman at nearby Pevensey Sluice, spotted what appeared to be the upturned hull of a ship off the coast. He alerted Mr Bussell, the chief-officer of the watch and the two men watched as it headed towards the beach under a strong south-westerly wind. It was not a boat it was a whale - a huge Finback whale over 70 feet long and weighing more than 50 tons.

Whales were, at this time, hunted for their blubber which was a source of whale-oil which was used for lamps, margarine and soap. A huge whale was very valuable indeed and the following day the Mayor of Hastings, Alderman Ross, attended the scene with his Town Crier, Mr Cox. The carcass of the animal was claimed by the Town of Hastings under the Cinque Ports Charter but there was a counter claim by the local Customs-House on behalf of the Board of Trade. It was agreed that an auction should be held and this was conducted by Mr Groome, the Collector of Customs at Rye. Bidding started at £15 and the animal was eventually sold to a group of ten local fishermen led by a Mr Mark Breach for £38.

Anxious to make the most of their unusual purchase, the fishermen erected a canvas screen around the scene and charged sixpence for a

guided tour. On the Wednesday, hundreds of sightseers descended on the bay and within two days the fishermen had made back their money. People travelled by train to either Bexhill or Pevensey Stations to walk along to Normans Bay. Such was the demand that special excursion trains were laid on and in order to assist the crowds, a temporary station was quickly built of old sleepers and timber. Thirsty tourists went to the nearby Star Inn and on one occasion the pub ran dry and it is said that the landlord had to barricade himself and his family in an upstairs room to protect them from disappointed customers

The owners of the whale made a shrewd investment and probably made back their money many times over. Visitors who paid to see it were treated to music played by a band standing between its jaws and, on one occasion, the sight of 68 children standing in its mouth. Thousands of people visited the dead whale despite its offensive smell.

The local public house; The Star Inn (still in use today) initially benefited from the huge increase in demand, but soon ran out of beer and the publican's family had to barricade themselves upstairs whilst the mob drank everything they could find! They then urged the local authorities to construct a railway "halt", to cater for several thousands of Londoners arriving daily. However, Victorian ladies resented the indignity of being handed down by "rough brutes" and a temporary platform was made from railway sleepers so that passengers no longer faced having a risky jump several feet from the train onto the rail bed.

But like all things, the carcass began to decompose. The stench eventually forced all to keep a great distance away, but nothing went to waste in Victorian times, so the carcass was stripped of its flesh, to be sold as dog meat, the blubber boiled for oil and the skeleton was then sold to a Hastings businessman, who had it moved from the beach to a cricket field in Hastings. In Sussex, the whale washed up at Norman's Bay is the 'Pevensey whale'.

And what has Norman's Bay to show for all this excitement? Well a railway station. The sleepers and timbers which were hastily erected to make a temporary station became a permanent station now known as Norman's Bay. What was just a temporary "halt" for water (and possibly a quick nip to the Star) became an overnight tourist sensation.

In Cambridge, the same creature is synonymous with the Museum of Zoology, which acquired the whale in 1866 and has displayed it almost

without a break since 1896. The existence of the finback whale at the centre of a university museum is tribute to the farsightedness of William Henry Flower, conservator of the Museum of the Royal College of Surgeons, who rushed to the south coast to see the dead giant a few days after it was washed up. Flower quickly wrote to John Willis Clark at Cambridge's Museum of Zoology to suggest that he acquired it. More than a year passed, however, before the whale was transported to Cambridge.

It changed hands several times and was put on display at Hastings cricket ground. The carcass was carefully stripped, not only to secure the precious whale-oil but also to preserve the skeleton. This was done under the guidance of Mr Flower. The skeleton of this once beautiful creature is now on display at the Museum of Zoology at Cambridge where it is still a popular attraction. It hangs above the main entrance and is illuminated at night. William Flower would have been impressed. He visited from the Royal College of Surgeons and later contacted Cambridge University suggesting that the skeleton could assist biology students.



Thought to be the largest skeleton of a finback whale on display in the world, it measures around 70 feet from nose to tail and weighs two tonnes. The whale skeleton is such a Cambridge landmark that since June 2015 it has even had its own twitter account @whale_whispers. Not surprisingly, an ambitious project to re-develop the Zoology Museum puts this iconic creature at the centre of the stories about the natural world told by displays of thousands of items – including objects collected by Charles Darwin, Alfred Russel Wallace and Alfred Newton.

Kevin Regan

SJFeist

& Co Limited

HEATING & PLUMBING ENGINEERS

Aga/Rayburn Approved
Oil & Gas Boilers Serviced
£100 off New Boiler Installation or
£15 off with this advert
CALL: 01424 754247
Email: info@sjfeistandco.co.uk



The Forge Garage Hooe

Peter Baker Auto Repairs

☎ 01424 892296

MOT testing ~ servicing ~ repairs.

Tony Farnham

Electrical Services

Domestic & Commercial

Tel: 01424 893140

Mob: 07966 156463

MPW Electrical Service

All types of electrical work
considered

Mike Waghorne

Belle Vue

Standard Hill Close

Ninfield

01424 892663 07703 470042

Mikewaghorne1@gmail.com

FITNESS PILATES Conditioning & Toning

Mon 11.00, Thurs 9.15 & 10.30 £6.00p/c

NINFIELD METHODIST HALL

All levels welcome.
Bring a Fitness Mat and Water.
Spaces limited to book

07944 409443

Pearl Cheeseman

a Fully Qualified Fitness Instructor

Contemporary & Traditional

PEBBLESTONE

KITCHENS

*Fully fitted or supply only
Quality kitchens - affordable prices*

Est. 1987

Gavin Holden

☎ **01424 844522**

25 Cooden Sea Road, Little Common

A.P.S.

Tree Surgery. Fencing. Landscaping

Fully Insured & Qualified
24 Hour Call Out

Andy Stephenson

Proprietor

01424 223708

07920 118276

Email: andy@apstreesurgeryfencing.co.uk
www.apstreesurgeryfencing.co.uk



NINFIELD

Lower Street

Fully Licensed

Convenience Stores

News & Magazines

Daily Deliveries Fresh Fruit / Veg & Bread
DVLA, Banking & Currency

892281 post@ninfield.com



News from Ninfield Horticultural Society.

Hello to all our members, old, new and in the future.

We hope you are all keeping well and safe, and are enjoying your own gardens this year.

A year without Ninfield Horti Spring and Summer Shows is quite sad and I don't know if we have ever had a year since we began in 1951 that this has had to happen. However, it is not all gloom and doom. As soon as we are able to resume, we have a list of speakers booked for future evening meetings. And the Shows will go ahead next year, we hope.

We have decided to use the 2020 photography and craft class titles in 2021. This means you can prepare for these classes now. Remember, you can exhibit even if you are not a member.

Photography class titles Spring 2021: 'Treebark'; 'Building Site'; 'Market Day'; 'Straight Lines'; 'Illumination;' and one where digital manipulation is encouraged called 'Pebbles'.

Craft Class titles Spring 2021: 'An embroidered/cross stitch picture'; 'A quilted item'; '6 plant labels – any medium'; 'A knitted hat'; 'An item in wood, metal or glass'; 'Spring Flowers- a painting'; 'A rag doll'; 'A jewellery item'; and 'An item of handicraft other than Classes 56-63'.

Photography class titles Summer 2021: 'A public Floral Display'; 'Having Fun'; 'Something Old'; 'Footprints'; 'Woodland'; and one where digital manipulation is encouraged called 'Circles'.

In addition there will be a special photography class entitled: 'My Garden during Lockdown' Try to think how best to portray this!

2021 is the 70th Anniversary of the Society so we hope we will have bumper numbers in the shows – particularly in the photography and craft classes now you have so long to prepare for them!

To mark this Anniversary we have a special event on Saturday 5 June – early evening. Our speaker will be Juliet Sargeant. She is perhaps best known for her Chelsea Flower show garden in 2016. She was the first black gardener to exhibit at the show and her anti-slavery

garden won a gold medal. It also won the People's Choice Prize. Amongst her television appearances, Juliet provides coverage of the Chelsea Flower Show for the BBC and has appeared on Gardener's World investigating the benefits of gardening to our health and well-being. This subject is dear to her heart having originally trained as a doctor before training in garden design some 20 years ago. Juliet runs her own garden design school and believes that beautiful natural surroundings are a priority for relaxation and healthy living. Please put this date in your diary – we will, I am sure, have a very enjoyable celebratory event.

If you are not a member of our society, please think about joining. For more information contact the Show Organiser: Rose Franks on 01424 892422 or email: rose.franks1@btinternet.com

THE “VIRTUAL” HOOE OPEN GARDENS 6-7 JUNE

Sadly the HOOE-OPEN-GARDENS FOR 2020 is cancelled. We will though, be having a '2020 Virtual Open Event' instead. When the Open Garden Hosts, who are still beavering away, will have the images of their gardens displayed on THIS website. So why not make yourselves a lovely jam and cream scone along with a cup of tea and settle down and take a “tour” of all the lovely gardens and appreciate all the hard work that goes into them
www.hooe-open-gardens.com

Woodside Acupuncture & Massage Clinic Opening in Ninfield this month

University trained acupuncturist
Angela Wallis has over 10 years experience treating problems including
Back, neck, knee, shoulder pain, Poor sleep and low energy levels
Stress, anxiety and depression
01323 819157 for information
or to book www.woodsideacupuncture.co.uk L
icensed acupuncturist and massage therapist

HOOE PARISH COUNCIL

Dick Carey	Chairman	01424 892051
Pam Doodles	892329	Robert Pilbeam 844365
Peter Hayward	893522	Gary Durman 893007
Jo Dix	892905	Ross Clifton 893206

Parish Clerk Jackie Scarff 07548 528754

Like all councils we are not able to meet face to face so we have temporarily suspended meetings for the time being. If we do need to discuss anything as a council we will use zoom to hold a virtual meeting. You will be very welcome to join and will need to contact the clerk hooepc2@btinternet.com for a meeting ID and password. We realise not everybody will have the technology to do this and so we will continue to spread news via email, or social media.

So as a round up reminder, all Parish Council Meetings are cancelled until further notice and the existing post holders will remain unchanged for another year. The Village Hall will remain closed and the Community is working well together.

The Open Gardens Weekend is cancelled but virtual open garden planned. Go to the open garden website www.hooe-open-gardens.com

There is a list of volunteers in the village who are active and ready to help anyone in need, just contact Pam Doodles or Parish Clerk

Hope Cottage are to be congratulated for all that they are doing. The hot meal delivery service has proved extremely welcome and had been enjoyed by many

Be careful on the roads. Whilst there is less traffic through the village which leads pedestrians to a false sense of security vehicles are being driven at greater speeds

You may be aware that Pam has a Hooe Twitter page and is regularly posting updates on twitter.com/hooeupdate if you would like to follow. There is also a new Hooe facebook page, much like many other local areas, anyone can join Hooe Community Group which aims to provide useful information for local residents from local residents.

Hopefully you have all noticed the VE day feature on the green featuring Tommy and a fantastic Spitfire model created by Jenny, Peter and Dick.

There is a new Parish Council phone number 07548 528754 to contact the clerk, and the email remains the same. The Parish council are still available as normal for any queries so please do not hesitate to contact us.

Old coppiced hedge stool near Sprays Wood, Ninfield



CHAMPION FENCING

FENCING DECKING & SHEDS

mickchampionfencing@gmail.com

TEL: 01424893418
MOB: 07973778308

Windmill Drive



Convenience Store, Post Office & Café 1-3 Windmill Drive, Bexhill, TN39 4DG

DVLA Services, Banking Services, Foreign Currency,
Lottery, Stationery & Gifts, Fully Licensed, Photocopies,
Photo Identification Services, Passport Photos, ATM,
Seasonal Plants, Daily Needs, Slushies'



01424.214.253

windmilldrivepo@gmail.com

Sarahjane Prince Cert. Ed. MSMA.MAR.

Appointments in Dallington and Heathfield

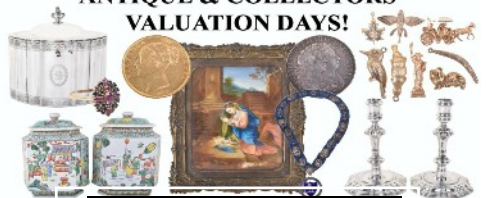
Sports Massage Zone fact Lift
Aromatherapy Swedish Massage
Reflexology Fertility & Delivery Reflexology

07762576495

eastsussexmassage@yahoo.co.uk

www.eastsussexmassage.co.uk

ANTIQUE & COLLECTORS VALUATION DAYS!



Every Other Monday from 13th April
At Reid Hall in Boreham Street .

Auctioneers
C&T
Valuers

Please contact us directly for more information,
Tel: 01233510650 Email: enquiries@candtauctions.co.uk
www.candtauctions.co.uk

Auctioneers
C&T
Valuers

Worms Eye View

I have just heard the cuckoo, faintly I admit, but definitely the cuckoo. Twelve days early but very welcome. Any bright spot during these dark days helps to lift our spirits. The birds are still active on my bird table and they are very welcome including the group of pheasants who visit daily. The flowers are also a treat and seem extra bright this year, but the weeds are flourishing too not so good.

Another bright spot at the moment (early April) is the sight of lambs racing each other then rushing back to mum for a quick feed. It's quite a time waster, just standing and watching them but I feel very lucky to have this diversion when all around so many people like me are isolated. We have also had quite a few calves, who after romping around looking for their mothers; again have a drink then lie down for a nap usually in a group. They are friendly with each other.

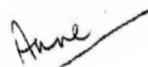
The only animal not happy at the moment is Norton the bull, who has also been isolated because of calving. I do try to speak to him each day and rub his head or shoulders, which he appears to like, and he even appears to smile whilst I'm doing it.

I think the virus has shown folk how important farming is and we need a secure domestic supply of food. At the moment one cannot be sure of food coming from abroad and food is at the top of our shopping list. It certainly will be a reminder to us older generation of ration books and the shortages during WW2.

I don't think we will be able to celebrate May Day , the traditional day for Maypole dancing, but will you follow an old tradition on May 3rd, Rowan Tree Day and pick sprigs of mountain ash (rowan) and taken them indoors to protect the house and its occupants from the Devil, witches and disease!

I wish everyone good health and as for the weather:

“A swarm of bees in May is worth a load of Hay”



Anne wrote this piece for the May issue which sadly we didn't print, so we have added it here, if slightly out of line with the season, and be assured Anne has considered the content of her next article for the July issue.

Ninfield Parish Council

<i>Parish Councillors</i>	<i>Phone</i>		<i>Phone</i>
Kaye Crittall – Chair	892883	Sam Guard –	893699
Pam Doodles	892329	Peter Holland	893326
John Cheshire	892248	Jackie Langley	892422
Paul Coleshill	893138	Kamala Willaimson	
Sheila Collins	893308		
Clerk Jackie Scarff		07725 843505	
e-mail – ninfieldpc@btinternet.com			

8 Weeks in lockdown has certainly been different for everyone. We would like to take this opportunity to thank each and every one of more than 60 residents who volunteered to help in response to the leaflet delivered back in March. It's truly heart-warming in a community when so many people are willing to help others. In addition to this we are aware that lots of you have also been helping friends and neighbours during this time, thank you all as it will have made the time easier for those who can't get out. We are also incredibly lucky to have our village shop delivering peoples shopping and the Blacksmiths offering a takeaway service.

We are still here to help and know that some people will need to continue to isolate for some time yet please don't hesitate to get in touch. Please contact the clerk on our new email address clerk@ninfieldpc.co.uk or tel 07725 843505.

Parish Council meetings will be virtual for the time being until it is safe for us to meet face to face again. We are using zoom and residents are able to join us by asking the clerk for a meeting ID and password, we realise that not everyone may have the technology to do this so we will continue to try and put paper notifications on the notice boards.

Hopefully you have noticed our grounds maintenance company are back working in the village. They will be following strict social distancing guidelines but will back doing weekly (for areas like the recreation ground) and monthly cuts of the verges. Hedges won't be cut until after 1st August because of the potential for bird nests. We do have a few designated wildflower areas that have protected Orchids growing. These areas cannot be cut until the flowers have gone to seed, but our grounds maintenance company are aware of where they are and they highlight them with little flower boards and they are very knowledgeable about how to look after them as well as the rest of the flora and fauna in the village. For the first time this year there are Orchid's on the verge along the edge

of the Memorial Hall Car Park, so this area, like Molly's Corner and the verge in Manchester Road leading to Coombe Lane won't be cut until the flowers have gone to seed.

We often get queries at this time of year about the daffodils looking a mess. It is key that the leaves are allowed to die back naturally and are not cut until after they have as this is what feeds the bulbs and ensures that they flower again next year.

We have noticed an increase in the amount of dog mess not being picked up over the past few weeks and have certainly heard from residents who are trying to enjoy walks in the village. Please do pick up after your dog, no matter where you are walking in the village, there is no magic poo fairy but we do pay for 10 dog bins around the village to be emptied every month.

Although the roads are noticeable busier already this last week, while they were quieter it was really obvious that some drivers were driving at much faster speeds than the speedlimit. We have an active speedwatch team in the village, trained by the police to use a speed radar gun loaned to us by the police. We are always keen to have new members, the more members we have the more we can be out in the village. It does make a difference, not least because persistent offenders (those whose details come up regularly on the police database) are sent letters by the police if their details keep appearing then the police visit to decide on further action. Those villages who do have active teams can also get more help from the police, including officers to stop cars and give fines and or points. Our latest bi annual meeting with East Sussex County Council Highways department was attended by two PCSO's who are keen to come and help. Some of our local villages are also keen to work together and help each other. If you are interested please contact the clerk, in the first instance there would be some online training organised by the police.

As you may be aware there was some work carried out on the Manchester Road site during lockdown. There were things that we asked Wealden District Council 's enforcement department to check out and it will be key as things progress that any concerns you have are reported to Wealden, but please also let the clerk know. You can email Wealden using planning@wealden.gov.uk This process is the same for any construction activity in the village. There is never a daft question as we want to keep the village safe for everyone.

We do not currently have a meeting planned so please do get in touch if you have any queries.

Thanks go to Paul Burson at the Methodist Church who thought you may like to 'have a go' at this fun word search (based on St. Paul's letter to the Galatians):

W U C K R V D H U I D S S X U H B
 X S E L F C O N T R O L X K W Q J
 O L A N A P E A C E H I D E K M F
 E D F D F S S E N E L T N E G F A
 G U R V Z C A I T A L A G E P C I
 N Q U Z C M R K S Y G H V A P M T
 I W I E Y A U O I R E G U V U R H
 N E T C V M J I T N E L K W U M F
 L G S N W M D Q Q I D H Q V P H U
 K T I E G I L S A H R N Q N J R L
 P P T I N N H U S M N I E B B B N
 F J U T B S Q Z D E P J P S N L E
 D Y D A D Y F A W E N A N S S T S
 G Y L P Y X Y B T F V D M L V U S
 U X I O C O X C W T N B O P C Z J
 Z D G G V I J X N R S W G O O K J
 N F O E F E L E N D C D Y L G F S

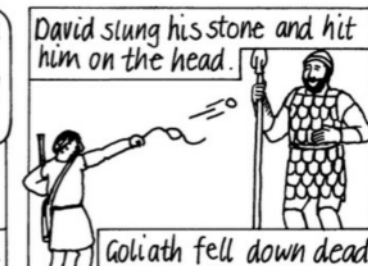
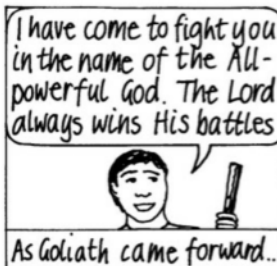
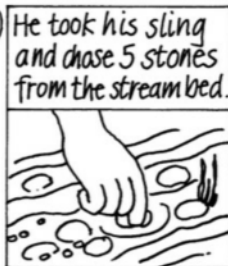
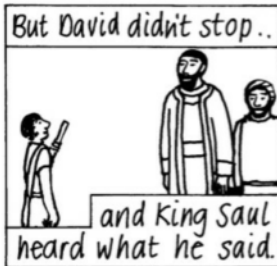
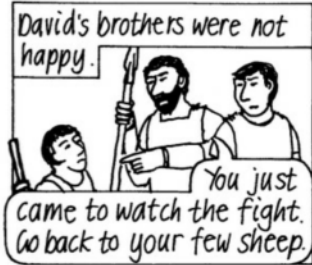
Spirit	fruits	galatia	paul
Selfcontrol	gentleness	faithfulness	goodness
Kindness	patience	joy	peace
	love		

Bible Bite

A short story from the Bible

It can be read in the Bible in
1 Samuel 17:1-50

The Philistine and Israelite armies
faced each other. For 40 days, the gigantic
Philistine champion, Goliath, taunted them.



NINFIELD METHODIST CHURCH

Minister: Reverend Patricia M. Williams BA (Hons)
15 Holmesdale Road, Bexhill TN39 3QE.. Tel: 01424 733137;
email: revpwilliams@yahoo.co.uk

Church Hall Bookings: David Swales 892248

Very Best wishes from us all. Look after yourselves & keep well.

We are pleased to let you know that we now have a website with a weekly recorded service & other news including Messy Church activities.

Do have a look: hbrmethodistcircuit.online (then click on Ninfield).

Well, we do hope you've enjoyed this edition of the Parish News, next month, as already mentioned we doubt we'll be able to do the usual printed copy so will do another one on line.

If any of you would like to send in an article, photos from around Hooe and Ninfield, recipes, ideas, competitions etc. we'd love to put them here. Send them to ninfieldnews@btconnect.com

The cut off date will be **FRIDAY 19TH JUNE.**

We look forward to receiving all your articles.



We've all seen on the Ninfield Community Facebook page requests for recommendations, well throughout this magazine there are lots of adverts for the many and varied services available in Hooe and Ninfield. So check them out, keep everything local and most importantly, keep safe, social distance when out, stay home. "See" you next month!

WILL WRITING SERVICE

Usual fee £145 + VAT

Request a Free Wills Brochure

Lasting Powers of Attorney

from £235 + VAT

01323 460395

Probate Advice

Probate & Estate Administration

01323 768382

BARRY & CO SOLICITORS

Bay Terrace, Pevensey Bay

info@barryandco.org



LEGAL KNOWLEDGE SOLICITORS
YOUR CONCERNS - OUR COMMITMENT

IS YOUR HOME YOUR CASTLE?

HAVE YOU GOT SOME GOOD PLANS?
BOUNDARY OR NEIGHBOURS AN ISSUE?
PERHAPS A CONFIDENTIAL CHAT WITH
AN EXPERIENCED SOLICITOR ADVOCATE
IS JUST WHAT YOU NEED!

CALL **FIONA DUFF** on **01424 893210**

fiona.duff@lkllegal.com

WWW.LEGALKNOWLEDGE.NET

Directory of Groups & Clubs

NINFIELD ACTION GROUP Paul Coleshill 893138

NINFIELD BONFIRE SOCIETY Secretary Carol Holland 893326

NINFIELD BOWLS CLUB: Secretary: Mrs Val Smith, Bexhill 843436

NINFIELD CARNIVAL & SPORTS ASSOCIATION:

Samantha Guard, 893699 or 07970 650321

NINFIELD CRAFTING & KNITTING: Jane Dommersen 862428

NINFIELD AND DISTRICT ART SOCIETY:

Secretary Jennie Harmer 892357 jennieharmer@aol.co.uk

NINFIELD FLOWER GROUP Jennifer Collett 892878 ninfieldflowers@gmail.com

NINFIELD HORTICULTURAL SOCIETY:

Show Organiser: Rose Franks, Little Gates, Potmans Lane, 892422

NINFIELD LOCAL HISTORY GROUP

Membership Sec. Corinne Gibbons 892612 corinnemgibbons@gmail.com

NINFIELD PLAYGROUP & TODDLERS

Preschool: Liz Walker, 7 Thorne Crescent, Bexhill, TN39 5JH

Toddlers: Stacey Boarer, 07967436479

NINFIELD VILLAGE ALLOTMENTS: Phil Ringrose 892792

NINFIELD VILLAGE SOCIETY: Robin Goldsmith 892778

1st NINFIELD SCOUT GROUP

Group Scout Leader: Martin Gausden martin.gausdengslninfield@hotmail.co.uk

Explorer Scout Leader: John Hornby 07783471115

Scout Leader: Glen Harrison 07936552785 ninfieldscouts@gmail.com

Cub Scout leader: Tracey Harrison 07970 359724 ninfieldcubs@gmail.com

Beaver Scout Leader Sandra Creasey 07908 558721 ninfieldkaa@googlemail.com

Group Chairman: Rosemary Cooper

NINFIELD WORKING MEN'S CLUB: Julia Hurrell 07508 080608

DANCE & DRAMA CLUB: Samantha Guard, 893699 or 07970 650321

HOE BELL RINGERS : Simon Pattisson 845087

HOE HISTORY GROUP: Chairman Heather Sinden 893422

HOE LINE DANCE GROUP: Heather Sinden 893422

HOE OPEN GROUP: Heather Sinden 893422

HOE SPORTS CLUB Chairman: Tim Bryant, 2 Saddlers Cottage, Hoe

HOE VILLAGE ALLOTMENTS: Gary Durman, 893007

CHRISTIAN WOMEN'S FELLOWSHIP Pam Doodles, Catslide, Hoe 892329

SENLAC BELLS Conductor Alan Collings 893313

STOOLBALL: Fixture Sec. Linda Smith, Holmes Farm, Whydown 845163

PARISH WHO'S WHO

PRIEST IN CHARGE OF NINFIELD AND HOOE Rev Paul Frostick,
18 The Ridings, Bexhill on Sea. East Sussex. TN39 5HU. 01424 218126.

PARISH CHURCH of St. MARY the VIRGIN, NINFIELD

Churchwardens: Mr Phil Ringrose ☎ 892792
Mrs Catriona Mary Owen ☎ 225421

Secretary: Mrs Ann Ringrose

Treasurer: Mr Phil Ringrose

PARISH CHURCH of St. OSWALD, HOOE

Churchwardens: Mr Jack Rist ☎892576
Mrs Janet Pattisson ☎845087

Secretary: Mr John Fairclough

Treasurer: Mrs Cynthia Fairclough

USEFUL CONTACTS IN THE VILLAGES

THE PARISH NEWS Email ninfieldnews@btconnect.com (893326

NINFIELD PARISH COUNCIL

Clerk to the Council: Jackie Scarff (07725 843505 ninfieldpc@btinternet.com

HOOE PARISH COUNCIL

Clerk to the Council Jackie Scarff (07775 25843505 hooepc2@btinternet.com

READING ROOM

Booking Enquiries: Anne Ringrose (892792 email ringrosep@aol.com

MEMORIAL HALL

Booking Secretary: Jane Dommersen 892428 07984 721504
ninfieldmemorialhall@gmail.com

HOOE VILLAGE HALL

Booking Secretary: Mrs Sally Durman, 1 Elizabethan Cottages, Hooe (893007

METHODIST CHURCH HALL

Booking Secretary: Mr David Swales (892248

C of E PRIMARY SCHOOL

Head Teacher: Mr. Chris Brown, Church Lane, Ninfield (892486

DOCTORS The Surgery, High Street, Ninfield (892569

NINFIELD STORES, Lower Street, Ninfield (892281