

The

Parish

News



News, events and stories

In & around

Ninfield & Hove

February 25 50p



St MARY's & St OSWALD's

NOTICE BOARD

CHURCH SERVICE TIMES



	St Mary's	St Oswald's
2 nd February	9.30 Parish Eucharist	11.00 <i>Family Service</i>
9 th February	<i>No Service</i>	11.00 Joint Parish Eucharist
16 th February	9.30 Family Eucharist	11.00 Parish Eucharist
23 rd February	9.30 Parish Eucharist	11.00 Parish Eucharist

Opening times for Private Prayer

St. Mary's - Tuesday to Friday 9.00am to 3.00pm Where Possible

St. Oswald's - Open daily from 9.00am - 5.00pm

Any alterations or additions to these service times will be displayed on the church notice boards, the weekly sheet and can be found on the church website along with other church details ~ www.ninfield.org.uk

APPOINTMENTS All enquiries about

Baptism, Marriages, reading of Banns or any other Church matters should be made to The Church Wardens, details on the back page

PARISH NEWS

Views expressed in the articles in this magazine are those of the writer and not of the Parish Churches or PCCs unless it so states.
This publication is produced and distributed by Members of both Parish Churches.

Dear Friends,

I wonder what you think about Valentines Day? We know very little about the original St Valentine, other than that he was an early Christian martyred for his faith back in the 3rd century. In due course, Valentines feast day, 14th February, became associated with the celebration of love and courtship. How did this happen? No one really knows. In England, the tradition of choosing and calling oneself a Valentine goes back at least as far as the 15th century. I wonder if you will be sending a Valentine card this year, or be expecting to receive one? Perhaps you will be planning on taking your loved one out for a special meal, or you will be giving them a special gift.

Or maybe you are dreading Valentines Day as it can be full of memories and can be a difficult and painful time. It can bring back memories of a departed loved one, or bring back the pain associated with a broken relationship. And for some, it can heighten a sense of loneliness. I think it is good to remind ourselves that love and pain often go together. The more we love someone, the more we open ourselves to the possibility of being hurt. It is the way it is. Yes, when we love someone there will be times of pain and hurt. But there will also be times of great joy, and I think for most people most of the time, the joy of being in love far exceeds its challenges.

The Bible teaches us that God is Love, and that love is at the heart of the Christian life: love for God, and love for our neighbour. It also teaches us that love can be costly. For Jesus himself, the life of love led to him being crucified on the Cross. Many Christians have seen Jesus' death and resurrection as signs of the transforming power of God's love. Gods gift of love in and through Jesus gives us forgiveness of our sins and the gift of new life.

Whatever your thoughts about Valentines Day, I think it is a good opportunity to reflect upon the importance of love in our lives. It is a time to give thanks for all who have loved us down the years, and a time to give thanks for those whom we have loved and still love.

Paul

Prayer for February 2025

Dear Lord,

February can be a trying month, but there are special associations too and we thank you for the hope they bring.

In February we remember how Jesus was taken, as a baby, to the Temple. Simeon took Him in his arms and by the power of the Holy Spirit, recognised Him as the Saviour you had sent as a light, to bring revelation to the whole world. And how this world needs your light and revelation in this new year, 2025.

Lord – as we notice more light in the lengthening days of this month, as we see the promise of the Spring in the bobbing heads of the beautiful snowdrops – help us most of all to recognise Jesus as our Light and to trust in Him as our Lord and Saviour.

Thank you, Lord, for the gift of each new day. In Jesus' name. Amen.

By Daphne Kitching

A Prayer (or at least a request) granted

If you have looked up at the top of the steeple at St Oswald's you would have seen our bright and colourful new Union flag. The benefactor is our own editor Nicki Murphy who answered the appeal. (On the understanding that she wouldn't have to climb the tower! Thanks to Peter Ballard for completing that task)) It will have been put through its paces this January with all the high winds but looked beautifully sewn. Thank you Nicki. If anybody wishes to help keep a flag flying at St Oswald's please contact Carole Ballard 01424 210980

St Oswald's

Baptism of Balthasar Louis Thomas Baer
on 22nd December 2024

Funeral of David Formby 7th January 2025.

*from the
Parish Records*

News from St Oswald's

At St Oswald's, we have all come through what was a hectic December 2024. There were plenty of nasty colds and flu lurking about but the services were well attended. The Carol Service with Hooe Band was very enjoyable and busy! Thanks go to the Band and our team of helpers for making it a joyful occasion. The rain kept off until the end just as we were all leaving.

Thank you to those that helped with decorating of the Church and tree. We have received lots of positive comments about how fine our little church looks when it is decorated for the Special Services. Thank you to the cleaners, flower arrangers and the odd job helpers.

We could not manage without you all. On that note, we hope that some of you would be able to spend an hour or two, on Saturday 15th March for a Church Spring clean (inside) and a Churchyard tidy up (outside).

The news about the toilet extension is encouraging. There are surveys booked in January to inform both Wealden District Council and Chichester Diocese of the plans and progress of the project. Next month, we hope to know the costs of the project and launch the Fund Raising campaign. The New Year looks promising for the church. We hope that it will be promising for all of our Hooe parishioners.

Happy New Year from all at St Oswald's Hooe.

Editors' Comment... 2025, a quarter of a century on from "what will happen?" when we went from 20th to 21st century! How times fly and things change!

This month we'll be writing to all of you who have an advert with us to ask if you'd like to renew for another year from April, so if anyone is thinking of advertising, now might be a good time to contact us to go on a wait list, as we usually have one or two who, for various reasons drop out. Then in March our lovely distributors will be asking for £5.00 to continue delivering for another year and we'd like to thank all of you for your support during the year and grateful thanks to the volunteers who deliver your News to you. And please do send articles to be included here, we'd love to hear from you *Nicki & Carol*



February Diary

		Venue	Page
3 rd	Flower Group AGM	Memorial	20
7 th	Book Exchange	Methodist	7
8 th	Coffee Morning HVCG	St. Oswald's	29
12 th	Christian Women's Fellowship	Methodist	33
13 th	Ninfield History Group	Methodist	12
14 th	Hooe & Ninfield Open Group	Methodist	23
15 th	Village Market	Memorial	10/16
17 th	Ninfield Horti Coffee Morning	Memorial	18
20 th	Hooe History Group	St. Oswald's	17
25 th	Time Together Tuesday	Methodist	33
27 th	Flower Group Work Shop	Methodist	20
28 th	Lunch Club	Methodist	7
28 th	Men's Shed	Spark	7
MARCH			
6 th	Village Society AGM	Methodist	13
8 th	Flower Group Jumble Sale	Memorial	20

NINFIELD PARISH COUNCIL

Clerk to the Council:

Jackie Scarff 07725 843505 clerk@ninfieldpc.co.uk

The Parish Council wishes residents of Ninfield a Happy Healthy and prosperous New Year.

Sadly, towards the end of 2024 two of our cllrs had to resign their posts. Sheila Collins has moved out of the area nearer family and Steve Vanner's work priorities meant that he has had to step down. The Parish Council would like to take this opportunity to thank them for all they have done.

The parish council have advertised the vacancies and at the December meeting Co Opted Kaye Crittall on to the council. We do still have a vacancy.

What is a Parish Council?

A parish council is a local authority that makes decisions on behalf of the

People in the parish. It has overall responsibility for the well-being of its local community. The Parish Council representatives are elected every four years but are able to co opt members of the community when there is a vacancy. The parish councillors represent the local community, delivering the services needed to meet local needs and stive to improve the quality of life in the village.

If you've never been to a meeting, why not come along to the next one on Thursday 20th February 2025, 6.30pm at the Methodist Hall. If you are interested in becoming a cllr the best thing is to have a chat with one or more of the cllrs.

At the December meeting the parish council discussed the precept for the forthcoming year. It was agreed that the precept would be the same as last year. In real terms this means a 3.4% decrease for residents v last year. When you get your council tax notification you will see that the parish council portion is approx. 3% lower than last year.

The next meeting will be February 20th and all are welcome to come along

Ninfield Health and Wellbeing Group aims to promote the health and wellbeing of people in the local community. Established in 2018, the NHWG is an umbrella organisation supporting a range of activities.

Ninfield Lunch Club

This is proving very popular and is on the 4th Thursday of each month. For details, please contact Maggie on: 07985588524 or email: maggiethcook@gmail.com

Book Exchange and Community Café

Methodist Hall 10 – 11.30 weekly on Friday.

First Friday monthly: Book Exchange and chat over tea/coffee and biscuits. Donations asked for books and refreshments. A wide range of books and good company.

Community Café open on all other Friday mornings – you will be made very welcome.

For further details contact David on 07989729123 or dj_swales@hotmail.com

Women's Crafting and Knitting Circle

Memorial Hall. Weekly 10.30 am – 12.30 pm. £5 per session. A well established friendly group.

Health Walks

Every Thursday. Trained local volunteers lead a gentle walk of about an hour. Meet 11am at Sparke Pavilion at Ninfield Recreation ground near the main entrance off Church Lane. A few more walkers welcome. Part of the East Sussex Health Walks scheme. Please wear suitable footwear. For more details contact Robin 01424 892778
robin@plowmate.plus.com

Men's Shed

Now an established friendly group meeting at Sparke Pavilion. 10 am last Friday of the month. Men putting the world to rights over free coffee. For more information contact Dave: 01424 892883.

Friendly Voices

We started again on 7th January with some new songs as well as old favourites. Some of you may have seen us in December at various events and hopefully seen that we just like to enjoy ourselves. We meet up on Tuesday evenings from 7.30pm in the Methodist Hall and Thursday afternoons from 2pm in the Sport Pavilion and anyone is welcome to join us. As I always say - we are not a choir, but a group of people that come together just for the fun of singing. At £1 a session it's very good value
k.crittell@btinternet.com or 07707 683187

Film Matinees

Memorial Hall Tuesday afternoons. Doors open at 1.30. Films start at 2 pm. FREE entry and refreshments. Dementia friendly and subtitles.

Films and dates for your diary for 2025 are as follows:

4 March: Swingtime

8 April: Billy Elliot

13 May: Grease

24 June: The Magnificent Seven

2 September: Chicago

7 October: The Ladykillers

11 November: A Hard Day's Night

9 December: Arthur Christmas

For more information or to book a place (to ensure enough cake!) contact Jackie or Rose:

01424892422 or email: jackie.langley1@btinternet.com

Dark Skies -

The skies last year were brilliant with so much going on - who knows what 2025 will bring. We are meeting in January to draft out a diary of events including the delayed Bat Walk with Sussex Wildlife, but the main contact is through our WhatsApp group as sometimes it's a quick - 'have you seen.....' Please email me if you would like to join the WhatsApp group or watch out on the Community Page and Village Voice for any organised events. (k.crittell@btinternet.com)

Country Ways,

Night time

I had a final demand, that I should be at my Daughter's house for seven in the morning. That was Christmas morning and she lives at Westfield. That meant opening the Church and walking the dog in the dark! I did question this and yes it was that early because her children will be up and chafing at the bit to open presents. I had a decision to make either a Christmas dinner at hers or a bacon sandwich here.

Old age has robbed me of many things, night vision being one. The dog and I waddled up to the car in the beam of my small torch looking more like drunks returning late than being on a mission. The car held to prospect of warmth later on but now we just steamed up the windows. The radio was not much better! I had hoped for some carols to uplift my dreary spirits what I got was adverts on Classic FM, horrid, and a taste of what Radio 3 was planning. There seemed to be a Carol, jazz combo in the offing which I shall ignore.

There was nothing to see in the headlights on the trip to the Church; there was a time when I would have chosen to walk that short distance!

The first thing that struck me was the quiet. The coast road was empty and the wild life asleep or somewhere else. There was always hope of hearing an owl or even a fox, but all was still. The path ways were slick and muddy and water dripped from the trees, not a hint of 'deep and crisp and even'. To complicate matters my dog had vanished into the dark. She might be a shiny ginger lump but can lose herself feet from me as she blends into the dark and dead bracken. If I call her, well then I would not see any wildlife at all.

The click of the latch on the Church door made her show up. She loves going into the Church, it is the home of cake for her. There is a stillness found in a Church that is still used for services, a thousand years of expectation and praise leaves a mark. The only light was hanging in front of the alter. An electric tea light in a glass lantern. I found that very comforting, still light and hope here. 9

Time now to finish the walk and then travel into the centre of noise. It is not always easy to live quietly on your own, but dealing with noisy children can be a troubling alternative.

The only flowers we have are on the tree by the gate, I was told its name but of course have forgotten it. This tree, some sort of cherry maybe, has decided that mid winter is a fantastic time to make flowers and attract insects. It embodies that space between relentless hope and stupidity!

We still have active moles, new mole hills are popping up all over the place. Last year during all the rain and saturated earth I feared we may have lost them. The last and only other creature I see are the three squirrels. They have a strong desire to use there climbing skills and speed to run away. A good defensive move apart from one flaw, they always run and climb in the same direction. I do this sometimes, slip into game keeper mode.

It is the squirrels that made my idea of feeding the birds at the Church this winter a none runner. There would be no food left by the time the birds woke up. Also can you imagine the fight between the crows and magpies, just for the honour of taking on the squirrels. That would upset game keeper mode, all those predator's in one spot. Best not to think of the jay's then!

By the time this comes out we will all know if the forecasted cold snap arrived. It is due about mid January. It is always an anti climax when all we get is wind and rain, not for long though. Snow looks good for a short while but frozen joints and bruises form slipping on ice soon repel 'deep and crisp and even'.
AT

NINFIELD BONFIRE SOCIETY

Our community spirit burns bright year after year, and we'd love for you to be a part of it! We meet regularly on the third Wednesday of every month at 7:30pm at the Ninfield Working Men's Club (Tin Hut). Whether you're a new face or a long-time member, you're always welcome to pop in, say hello, and discover more about what we do.

We'll have a stall at the Ninfield Village Market on **Saturday, 15th February**. Stop by for a chat, learn how you can get involved, and explore our merchandise. We'll be running a tombola, so come along and try your luck!

Fundraising and Upcoming Projects

We're in the process of organising several fundraising projects to support our annual Bonfire Night - a cherished tradition in Ninfield. Keep an eye out for posters and updates on our social media channels for ways to get involved. Every little bit helps us create an unforgettable night for the community.

Help Us Keep the Tradition Alive

This year, we're seeking assistance in sourcing **wood for torch bats** for the procession and **brushwood faggots** for the bonfire. If you have access to a wood that we can coppice and are willing to help, please could you kindly contact Ash at ninfieldbonfire@gmail.com or call Sarah on **07809684488**. Your support is vital in preserving these time-honoured traditions.

Torch Bats and Brushwood Faggots: Torch bats are rods of wood with a rag-wrapped end, treated to stay lit during the torch-lit procession. Their origins trace back to ancient Roman times when torches symbolized hope, enlightenment, and, at times, mourning. Each year, we prepare approximately 300 torches, cut to about three feet in length, and store them until they're ready to be treated for Bonfire Night.

Brushwood faggots are bundles of twigs and small branches tied together to form the base of our bonfire. They're prepared in April, cut to around four feet in length, and left to dry over the summer. These faggots ensure a quick-lighting fire that provides bright light, burns efficiently, and minimizes leftover ash, paving the way for the evening's spectacular fireworks.

If you'd like to join us in preparing torches or faggots, keep an eye on our Facebook page for updates on upcoming workshops. It's a great way to contribute and meet fellow community members.

Looking Ahead to 2025

As we plan for another spectacular Bonfire Night, we need your help to keep this beloved Sussex tradition alive by helping to organise the procession, bonfire, effigy, and fireworks. This requires time, effort, and funding. Here's how you can support us:

- **Become a Member:** Membership is open to all and gives you the chance to join our procession and others across Sussex. Your involvement can range from helping with fundraising and making torches to simply collecting donations on the night.
- **Volunteer Your Time:** Join us at events or help with preparations.
- **Sponsor Our Event:** If you're a local business, consider sponsoring us to support this free event for the community. Contact Sarah at ninfieldbonfire@gmail.com or on **07809684488** for more details.

This is your bonfire, your participation makes all the difference. Let's work together, create memories, light up the night and warm the heart of our village.

Stay Connected

Find us on **Facebook**, **Instagram**, and at www.ninfieldbonfire.co.uk. Keep up with the latest news, event details, and ways to get involved.

Remember, Remember the 5th of November!

A Dogs Life Christmas 24

My Christmas started on Monday with a knock at the door.

He bounded in a little early for me.

Said he would like to sit on my knee.

Strange I thought for a gentleman so old.

He will be good company or so I'm told.

He seemed very lively for such an old man.

My every move he started to scan.

I made him dinner to be sure he was fed.

Showed him to his room and warmed his bed.

4:00 in the morning he banged on my door.

I came down to a shock on the floor.

These things I've been used to as a nurse.

So I cleaned up the pooh and began to curse.

The following day was a repeat.

Wee on the carpet was not a treat.

He limps along like he needs a stick.

But chases a ball as he takes the mic.

The days went by the behaviour got worse.

How much longer I began to curse.

My Christmas gonk was no more.

Torn to shreds on the floor.

His Christmas duck received the same fate.

So I rang the care home before it's too late.

They said 'sorry no we are full to the brim'.

Give him a tranquillizer and knock him out

The worst it could do is give him the gout

He was standing on my table looking sullen and worn

When a ray of hope began to dawn.

Tomorrow his next of kin will be here,

I've told them not a chance for next year. HJ

" Ninfield Local History Group

Thursday Feb 13th The Ninfield Local History Group welcome Ron Wood who will be giving a talk on the Sackville family, an important and influential family who contributed so much to Bexhill;s history. The meeting starts promptly at 7.30pm in the Methodist Hall, Church Lane, Ninfield.

In March, we look forward to a talk on the history of Pevensy Castle, given by Janet Taylor. That will be on Thursday 13th March, same time same place. Members £1 and visitors £4, refreshments included.

Ninfield Village Society

A belated Happy New Year to all our readers !

Church Wood continued to take a lot of our time in the run up to Christmas, with fence repairs to the area to the north side of the footpath before the bridge. As previously reported we endeavour to use timber from felled trees in the wood for fencing, bridge repairs etc, but some trees seem resistant to being split [!] so we periodically have to purchase stakes and wire fencing and we are very grateful for the financial support we receive each year.

As usual NVS provided, erected and subsequently removed the Christmas tree in the Memorial Hall, with sponsorship from Catsfield Christmas Tree Farm. In addition we erected the tree on the Recreation Ground which then had to be re-erected following storm damage. The footpath from the Kings Arms to Lower Street was also the subject of work to clear weed growth and overhanging brambles to enable safe passage for all.

A NOTE FOR YOUR DIARIES....Our AGM is booked for Thursday 6th March, 7pm at the Methodist Hall. We try to make this a light hearted gathering so please feel free to come along to see what we do and join us for a cuppa. We usually have a guest speaker with expertise on local matters or the natural history of the village. WE LOOK FORWARD TO SEEING YOU.

HOOE PARISH COUNCIL

Clerk / RFO: Jane Warrener 07548 528754

Email: clerk@hooe-pc.gov.uk **Website:** www.hooe-pc.gov.uk

The Parish Council would like to wish you all a very happy New Year. The Christmas tree on the village green which was requested by several residents proved to be a great success and will now be an annual event. For those who might be interested, a new table tennis evening begins on Wednesday 15th January from 7pm to 9pm and every Wednesday thereafter at the Village Hall, everyone is welcome to come along and join in. For those gardening enthusiasts, a well-managed allotment plot has become available for rent, please contact the Clerk if anyone is interested in taking on the allotment plot.

The next council meetings are to be held on Monday January 27th and Monday 10th March Village Hall at 7.00pm

Councillor Gayle Kirk Hooe Parish Council



**MERIDIAN
TOILET HIRE**
.com
01424 892123

Hire local portable toilets for all occasions

Please contact us for further details

info@meridiantoilethire.com

We conform to all Health & Safety standards

C & C Carpets

CARPETS - VINYL - TILES Etc

SUPPLIED AND FITTED

No Job too small

CLIVE SCOTT 01424 893209

07939 528057



LEGAL KNOWLEDGE SOLICITORS

YOUR CONCERNS — OUR COMMITMENT

PROBLEM?

NEIGHBOURS? TENANT? LANDLORD?

BANK? CONTRACT? BEING PAID?

WHATEVER YOUR ISSUE, WE CAN HELP.

CALL **FIONA DUFF** IN CONFIDENCE:

01424 893210

fiona.duff@lkllegal.com

WWW.LEGALKNOWLEDGE.NET



SUSSEXGARDENSOLUTIONS

Landscaping

Design

Maintenance

Planting

Mowing

Fencing

Restoration

07771 944 249

01424 893 505

www.sussexgardensolutions.co.uk

enquiries@sussexgardensolutions.co.uk

Mrs. M. Keeley

MCFHP MAFHP

*Foot Health Home Visiting Service,
Nail Cutting, Corns, Calluses*

Tel: 01424 892120

Mobile: 07900 916942

JLS Cleaning Services

Shopping & Ironing also

Friendly & Reliable £15 per hour

Jo: 07964 158694

joannestandell@yahoo.co.uk



wildly crafted

IN HARMONY WITH NATURE

Cabins & Treehouses

We work in harmony with nature to create bespoke wildly crafted eco friendly cabins & treehouses made from sustainable materials.

Perfect for self contained accommodation, home office, therapy rooms etc.

TEL: 07725 752927

JOHN@WILDLYCRAFTED.CO.UK

WWW.WILDLYCRAFTED.CO.UK

Farmer's Choice Beef Box £135

A 10kg selection of Aberdeen Angus
28 day dry aged, grass fed beef.

Box with 1/3 steaks (frying & slow cook cuts) 1/3 classic roasting joints 1/3 mince.

Free local delivery within 15 miles
of Hockham Farm in Boreham Street.

Availability all year round,.

**Contact Nigel 07590532829 or
nigel@indiefarmer.com**

Summary of the returns of the survey for the Parish of St Oswald's Church, Hooe

Letters were sent to every home in the Village and all those on the Church Electoral role.

Thank you to all for responding and considering what you would like the church to offer to the community and perhaps what help you could offer to the church.

1. How you might help.

The majority of replies indicated that people are willing to help but your responses highlighted that we need to be a bit more specific as to the help we are seeking. Please note you do not need to be a member of the congregation to help and we would welcome some younger helpers.

Church Cleaning/Church yard tidying. We have a team of volunteer cleaners who share the weekly clean between them, doing about 4 weeks a year; approximately 2 hours a week. Contact Margaret for more details on 892576. We plan to have a Spring Cleaning Day in March. This will include jobs in the churchyard. We are trying to manage the churchyard to encourage biodiversity; allowing some areas to grow and others to be mown less frequently while maintaining tidy burial and cremations plots.

Church Flowers

There is a team of volunteers who share the task of flower arranging throughout the year (usually a pedestal and 2 vases on the altar). If you could help please contact Janet on 845087.

For festivals, everyone joins together to help decorate.

Accounts/Finances/Secretarial/Minute taking/Book Keeping Skills

Please contact the churchwardens if this is an area you feel you could offer help to see what might be involved. The PCC (Parochial Church Council) meet 6 times a year.

Opening and/or closing the church each day

Comments in our visitors' book indicate how much people appreciate the church being open each day.

Car parking and managing the traffic in the lane for events and special services.

2. Services in St Oswald's

The majority of replies indicated a preference to keep the current format. Rev Paul Frostick is only part time (2½ days per week). His time covers both Hooe and Ninfield so it is not easy to offer many options. The Sunday service is usually a Sung Communion (Eucharist) at 11am with a Non Eucharistic

Family Service on the first Sunday of the month to encourage families and young people.

The PCC will discuss with Paul what other services could be provided.

3. Proposal to combine with St Mary's Ninfield

The survey replies about the future of the Parish suggested that there is a preference to remain separate from St Mary's Ninfield. This is a delicate situation as the Diocese (Chichester) and the Deanery (Battle and Bexhill) will both be involved in the future of all the Parishes in the area. The final decision may well come from the Diocese.

4. Financial Help

Many thanks to those of you who have given us donations or adjusted regular giving. Like for everyone, the cost of keeping the Church safe, warm and secure is always increasing so whatever you can give is gratefully received.

5. What else could the church do for the community?

Your views on the activities of the Church in the Community suggested that we should continue as we are, using both the Church and the Village Hall for social events. Whist drives, a quiz night, more concerts, were all mentioned but once again for these we would need help.

Our thanks go to everyone who already supports the Church in so many ways, from manning the lane, to running a stall at the Garden Party, to baking a cake and so on!

Janet Pattisson/Jack Rist Churchwardens

NINFIELD MEMORIAL HALL

SATURDAY 15th FEBRUARY

9.30 - 12.30

VILLAGE MARKET

The Pop Up Cafe will be open for

Bacon & eggs, teas & coffees, and more!

There'll be your meat, cakes & pies, honey

fruit and veg, bread, eggs and who knows what else,

NOTE THE CHANGE IN TIME 9.30 - 12.30

Hooe History Society

Our speaker on Thursday 20th February will be Melinda Stone who will give a talk entitled "Women's Lives in the 17th Century". History is often told in terms of battles, political & religious machinations and industrial developments. Less attention is paid to the realities of daily life for people living in any particular period, and even when this topic is addressed, it tends to focus more on the lives of men than of women. From the death of Queen Elizabeth 1, via the Civil War and Restoration to the accession of Queen Anne, English women's lives went through several changes which will be explored in this talk. We meet at 7.30 p.m. in St. Oswald's Church as normal. DID YOU KNOW... Looking through the newspaper archives I came across this article which took me back to my childhood when I gave this shop owner a large eel that I had caught and he gave me a walnut whip in exchange. Many older residents of both our villages may remember, as I do, the wonderful cheese shop at Lower Street, Ninfield.

...IF you like your cheese sweaty and suffocating inside a plastic wrapper keep well away from the Cheese Shop in Ninfield. To Mr and Mrs John Frost and their son John, who run the shop, cheese is virtually sacred - a food to be treated with the love and respect its flavour deserves. Almost 100 cheeses are available at the shop, gathered from all over the world. Mr Frost senior, 70, says he can get practically any variety a customer wants. The list is so comprehensive it even includes Shropshire Blue, a cheese that no longer exists according to a book from the Cheese Information Service. And the shop is one of the few in Britain to stock matured black wax Gouda and non-pasteurised Camembert according to Jenny Green who is writing a book on cheese.

The Frosts opened the shop 20 years ago and specialise in cheese because, they say, nobody else did - plus, of course, they love eating cheese themselves. They like too many varieties to have one favourite. Every cheese that comes into the shop is tasted for quality and the big cheeses are regularly turned, usually once a week. Mr Frost remembers turning a back-breaking 2,850 lb of cheese in one afternoon.

Being surrounded by Sage Derby, gruyere and the like, you might think the Frosts would have got sick of the sight of it. Think again. Like most enthusiasts there seems to be nothing they like better than to introduce a customer to a new taste. They sell their cheese on the "try some, buy some" principle. Customers can taste any of the cheese before they buy it. Customers come from miles around, and even from abroad, to the Cheese Shop and Mr Frost is proud of the personal service they receive. He likes to make customers feel like somebody not something. But the shop does not

just stock cheese. A glance round the shelves reveals a treasure house of exotic goodies that the supermarket generation probably have never heard of, let alone seen. The name of the Cheese Shop is known from Hong Kong to Los Angeles and people who have lived abroad come to Ninfield for the delicacies they miss, paw paws and sesame oil to name just two. One woman, a former ballet dancer, scoured Russia for some Russian caviar to bring back to her son in London and ended up getting it at Ninfield. Mr Frost has even succeeded in selling English salami from Henfield to Italians. One man took some of the salami to Barbados and came face to face with the man who made them. There are 11 different vinegars on the shelves.

Sadly, the shop, which was once described as a miniature Harrods Food Hall in the heart of Sussex, closed a short time after this article in 1978, when the Frosts retired. Peter Hayward.

NINFIELD HORTICULTURAL SOCIETY

Our 2025 Schedule is now available and copies can be picked up from the Village Stores or at any of our events over the next few months. We have made some changes to the schedule and changed some of the classes to encourage new entrants - especially the younger age group. Our Summer Show will include a class for both pre-school years and under 13's - A pot I have planted (from seed donated by the horticultural society) and in March, we will be working with the primary school and Muddy Boots to plant up a pot that can be shown in August. Children can also come along to our Plant Market in April to collect their seed, pot and compost. We have also introduced a 'Junior Parish Product Box' for August - 2 each of any edible plant grown in your garden/allotment. Any child between 5 and 17 can enter.

Our first event of 2025 will be a Coffee Morning on Monday 17th February, meeting at 11.30 in the Memorial Hall. We introduced the coffee mornings last year and they have proven to be very popular. There are no speakers, just a chance to have a chat and pick up some free seeds. Then on 10th March we have Doorstep Herbs giving us a talk on Stinging Nettles - and how to use them. Please note that our evening talks will now start from 7pm. Our events are open to both members and non-members.

Kaye Crittell (k.crittell@btinternet.com) 01424 892883

Worms Eye View

A New Year has arrived again and I am still here. It is rather a dull damp day as I write this but better than lots of snow which lot of the country has got and who knows the sun might shine tomorrow. I am ever hopeful. Christmas was very nice as usual and I was able to see quite a lot of family and friends which was great. I am just sorry that it all goes by so quickly, still I can now look forward to my granddaughters wedding in May and I have even looked out a hat to wear. We do not seem to wear hats so much these days, but I am expected to wear one on this occasion!

The birds are so pleased to come to my bird table, they are so welcome and a pleasure to watch, but two rats have also appeared several times and they are definitely NOT welcome. I hope that my cat will soon dispose of them, she is a very good mouser, but the rats look rather too big for her. I will give you an update next month.

There is always something to catch ones eye when looking from my window. I can see right down to the marsh which is starting to look very wet. That in turn means more birds are swarming in: I am not very good at identifying them, but enjoy seeing them. It is a lovely view across the marshes and up to Wartling. I do appreciate the view and would miss it if I had to move.

I wonder what 2025 has in store for us all. I sometimes wonder what life was like in 1933, the year I was born, in Horam. I remember that I was happy and the weather also was good, but I did wish that I had brothers and or sisters. However that was not to be. We had very good neighbours and when the war came we did have three evacuees living with us aged between six and fourteen, that was great for me but after six months the powers to be decided that Hailsham was not a safe place for them to be and they were moved to Wales. I still have photos and lovely memories of them.

A Happy New Year to you all

Anne

**Closing date for items for the
MARCH
issue of the Parish News
is THURSDAY 13TH FEBRUARY please send to
ninfieldhoenews@gmail.com**

Ninfield Flower Group A spectacular end to 2024 with our Christmas Demonstration presented by Ian Lloyd, a hugely talented florist and floral designer and a great show-man. It was a great sight watching those lucky enough to win one of his arrangements in the raffle contriving to exit the Memorial Hall, let alone get their prize into their car.

A cheque for £300 was given to a delighted Jean Plaskett, chairman of the charity The Sussex Kidney Trust, some of the money raised at our flower festival in the summer.

The following week 29 members met for our Christmas lunch at the Blacksmith's Inn. We all thoroughly enjoyed our meals and the opportunity to get together in different surroundings. Our thanks to the chefs and staff for making us so welcome.

So we begin another year of demonstrations and workshops. In February we hold our AGM with the competition being "a decorated box" using fresh or dried plant material, and on March 3rd, 7pm in the Memorial Hall, we welcome Jennifer Thompson with Flowers in Rhyme.

Our regular monthly workshops, held in the Methodist Hall, start on Thursday 27th February at 7.30pm. The title for creations is "Curls and Swirls". There is a small charge to cover the cost of the hall.

We are always pleased to welcome visitors to our monthly demonstrations at the Memorial Hall. Refreshments served from 6.30pm for a 7pm start. Entrance £5.

Having a spring clear-out?

**Jumble Sale
Saturday 8th March.**

We accept saleable items to the hall from 9.30 til 12.

**We cannot accept child car seats
upholstered furniture without a fire retardant label.**

Doors open for selling at 2pm. Entrance 50p.

JOHN BIGNELL Garage Doors

Automation / Repairs / New Doors

01424 210522
07970 230961

johnbignell@btconnect.com

Bargain Carpets & Floors

Carpets and Vinyl Flooring supplied and fitted
Same choice as any shop but at up to half
price



We can move your furniture
and take away your old flooring

For free home sample viewing and estimates
Please call Stuart or Lisa 01424 855882 /
07734 659834

Checkatrade www.bargainfloors.co.uk

THE BLACKSMITHS INN

A family run gastro pub serving
locally sourced, home cooked food
with weekly fish & game specials.

Tapas Thursday from 5:30pm £15.50

Sunday Roasts 12-4pm £16.95

Senior meals - £14.00

Takeaways £14.00

To book 893875

DANCE CLASSES

'MOVEMENT 2 MUSIC'

For the Older & Still Active Person
Every Mondays 10.00 am

LADIES DANCERCISE

Every Wednesday evening 6.30 pm

'BALLROOM/BURLESQUE!'

Fortnightly alternate Fridays 7.00 pm

All classes at the MEMORIAL HALL

Fully Qualified Professional Teacher

Call : SAMANTHA GUARD A.I.S.T.D.Hons.
01424 893699 or 07970 650321



Clifford

Upholstery

Professional upholsterer with over 25 year
experience in modern and traditional upholstery
methods.

Re-upholstery & recovering, Cushion making
Bespoke furniture, Repairs & Modifications

Headboards & plywood curtain pelmets

Upholstery tuition 07943 008 739

paul@cliffordupholstery.co.uk

for a quote or to discuss your requirements.



Boiler Installation & Servicing
Including landlord gas safety certificates

General Plumbing & Heating Services

Underfloor Heating

Kitchen & Bathroom Installations

Gas Boiler Servicing from £60+VAT

Oil Boiler Servicing from £80+VAT

Gas Safety Certificate from £49.50+VAT

Honest, Professional & Affordable

01424 892933

info@pandspumbing.co.uk | www.pandspumbing.co.uk

Constructionline safe METAS

SUSSEX SECRETARIES



DO YOU NEED HELP
FOR YOUR BUSINESS
OR IN YOUR HOME?

Call us to discuss
how we can help

01424 892463 07940 886123

ASTBURY

Windows, Doors
& Conservatories

Tel: 01424 893820

Mobile: 07740 877422

Email: info@astburywindows.com

www.astburywindows.com

The history behind Ingrams Farm

Most people know that the origin of Ingrams Farm in Ninfield is because of the Ingrams family which owned land in Hooe and then bought the farmland at the Catsfield Road junction. But it could have even more ancient origins. Let's turn the clock back to 1066. We know William landed in what was a large tidal bay at Pevensey. On coming ashore (and slipping face first into the mud, which was taken as an extremely bad omen) he recovered to exclaim "See, how eager I am to seize the land of England".

Climbing the first hill he saw; he planted the 2 Lions flag of Normandy on the top of the hill so all the others knew where to find him for further orders. (The 3 Lions didn't come about until Richard I (Lionheart) He wanted to show he claimed, not only England and Wales, but Normandy and France too. The Manor of Ninfield was held by Blaec, he also held land north of York, so it could be that he rode to tell Harold of the invasion, knowing the route, which most people would not, rarely moving more than a few miles.

The Domesday Book is helpful in showing who held land in 1066, again in 1070 when a first accounting for taxation was made (but as much of the South Coast had been laid waste, there was very little of value, with villages and crops destroyed and the population killed or scattered). By 1086, much of England had begun to recover from the destruction wrought by the Normans and their followers.

PLACE: NINFIELD. The Hundred of Ninfield. (Hundreds were a Saxon basis for dividing an area, supposedly capable of sustaining 100 families, dependents and others. It was also the meeting place for the Hundred Court, which was called to meet 12 times a year – the early form of "parish" council. It was probably chosen as being between Hooe and Catsfield which were also part of the Ninfield Hundred. Ashburnham, Wartling and Herstmonceaux formed the Hundred of Foxearle). Total population (1086): 11 households (quite small). Taxable units: Taxable value 3 exemption units. Taxed on 2.5. Value: Value to Lord (of the Manor) in 1066 £6. Value to Lord in 1086 £5.3 shillings. Value to Lord in about 1070 £1. So, virtually worthless for at least 4 years after the Battle and still not fully recovered in 20 years after the Invasion.

Households: 8 villagers. 3 smallholders. (villager would be a land holder (held from/on behalf of the King. That would include their families, such as elderly parents and children and other relatives). A "holding" would be the amount of land needed to feed a villager and his family. A small holder therefore, would not have as much land, but still sufficient to get by on and in co operation with others, still make a living, possibly by way of possessing

a skill, such as carpentry or similar ability. Ploughland: 12 ploughlands (land for). 3 lord's plough teams. 6 men's plough teams. Other resources: 1 Church. Lord in 1066: Blaec. Overlord in 1066: King Edward. Lords in 1086: Osbern; Reinbert the sheriff; Robert the cook; Warin, a villager. Tenant-in-chief in 1086: Robert, Count of Eu.

Next is the description of Hooe from the Domesday Book.

(to be continued next month)

KR

Hooe & Ninfield Open Group

We met on Friday 10th January in the Methodist Hall in Ninfield for our first meeting of the year.

We managed to persuade Gill King from Hooe to talk to us about her life which she called 'Not quite a bed of Roses'. A shy child who loved words and read everything in sight, was able to read when she started school but bunked off school the day of the 11+ exam and she was convinced she would fail. She took her 13+ and passed but didn't have the confidence to go to Grammar School. She learned typing and shorthand, left school at 15 and got a job. The family had now moved from East London to Essex so Gill went to work at the Ford factory where she met her first husband. He had an E type Jaguar which started her love for classic cars. After many moves, time spent in Northern Ireland and two daughters the marriage ended. A few years later she met her second husband and was very happy until he died of a heart attack aged 60. She had a vintage Austin Healey and she decide to join a car club to meet new friends. The child with the lack of confidence then took her A levels, thought about doing a degree and became a bereavement counsellor for people who had suddenly lost their partners. That is just a precis, it was a very interesting and in places a very amusing talk. She is moving from Hooe and we wish Gill every happiness in her new 'nomadic' life.

Next month we meet on Friday 14th February in the Methodist Hall at 2.00p.m.

All are welcome.

Nicki & Heather

SJFeist

& Co Limited

HEATING & PLUMBING ENGINEERS

Aga/Rayburn Approved
Oil & Gas Boilers Serviced
£100 off New Boiler Installation or
£15 off a service with this advert
CALL: 01424 754247
Email: info@sjfeistandco.co.uk



Building the future and restoring the past since 1929
NEW BUILDS - ALTERATIONS & CONVERSIONS
RESTORATIONS - EXTENSIONS - GROUND WORKS
BATHROOMS & KITCHENS - GARAGES - ROOFING SERVICES
- SURVEYING- LISTED PROPERTIES - COMMERCIAL
01424 892933
Info@parkerandsonconstruction.co.uk
www.parkerandsonconstruction.co.uk

BRIAN WICKENS

PAINTERS & DECORATORS

Qualified Tradesman Free
Estimates No VAT Home:
01424 224328 Mobile:
07803 095061



☎ 01424 892257
info@haffendenroofing.co.uk
www.haffendenroofing.co.uk

Experienced
HANDYMAN
Painting, Plumbing, Gardening,
House Maintenance etc.

Phone RICHARD
01424 272136 /
07980 933766 All jobs considered
Free Estimates

Contemporary & Traditional PEBBLESTONE KITCHENS

Fully fitted or supply only
Quality kitchens - affordable prices Est.
1987

Gavin Holden
☎ **01424 844522**
25 Cooden Sea Road, Little Common

A.P.S.

Tree Surgery. Fencing. Landscaping

Fully Insured & Qualified
24 Hour Call Out

Andy Stephenson

Proprietor 01424 223708
07920 118276
Email: andy@apstreesurgeryfencing.co.uk
www.apstreesurgeryfencing.co.uk



NINFIELD

Lower Street

Fully Licensed

Convenience Store

News & Magazines

Daily Deliveries Fresh Fruit / Veg & Bread
DVLA, Banking & Currency

892281 ninfieldstore@gmail.com



News, Reviews, Gala Revue and a Stark Warning!

A belated Happy New Year to all! Hope the Lurghi bug hasn't laid everyone low, and that 2025 has been met with Vim and Vigour all round...well...Er...something like that!

Already meetings have been had, changes made, and decisions put on hold ...if you're reading this before 27th January, you can pop down to the Memorial Hall for the AGM, my last as Chairman, and you can find out plans there for the year ahead.

2025 is a special year for Ninfield Carnival Association, it's the 90th Anniversary, and we have some amazing photos dating from 1935 right to the present that we are hoping to show in the Summer at the celebrations. But there's a problem, a lack of people power, and, seemingly, a lack of enthusiasm. Has familiarity bred contempt...?! I was told by one Committee member (younger than I!) that the majority of the Village think the Carnival Fête is just a little chintzy thing for the older demographic... Gasp!

Is this true?

Have the pre-Covid Carnivals and Processions gone from people's memories?! Does no one remember Ninfield's Got Talent, or The Full Monty fundraising cabaret??!! Can anyone get in touch and advise if this is really what everyone thinks?!!

Well, brace yourselves...the last meeting was a clincher...get yourself a strong coffee and see below...

NINFIELD CARNIVAL & SPORTS ASSOCIATION:

A newsletter was delivered to every resident before Christmas, and over the last 3 months we have been advertising our wish list for the 90th Anniversary year of Carnival; showing exactly how the many amazing ideas and suggestions are coming together, and what fun is proposed. We have asked for people to get involved and reinvent/recreate the fabulous Floats Procession, which was first done in 1935, alongside the Village Fete, as a fundraiser for all the Sports clubs in Ninfield.

To date, we have had NO RESPONSE from anyone. So, as a result of our meeting on January 13th, the Committee have decided to release the following important, and worrying statement.

"Do you love the Village Carnival? Band Night? The Fete? The Halloween event? The Pram Race? The Parties? The Michaelmas Fayre? Then it's time to take action. The Carnival Committee cannot continue to run these events without help.

We need pledges of help with the organising, and running of the Anniversary Summer Solstice Carnival Weekend or we may be cancelling it!

We will be holding a meeting in early February, venue tbc, and we encourage

you to please come and pledge to save the Carnival, then a decision will be made about the future. Without your help it will unfortunately die off!!!"
So, there you have it.
Look out for Date, Time and Venue Notices and Posts.
We need You!

GALA NIGHT!!!! Wow, what a fabulous evening! The Hall looked amazing, so many people complimented the beautiful decor, the Fish and Chips from Louis in Sea Road, Bexhill, were delicious - hot and on time! And the Cabaret worked brilliantly, much laughter and appreciation from the audience, and a special cheer for 16yr old Arla-Marie, who sang 'On my Own' from Les Miserables, followed by Broadway Baby, with Jenny Coulston and Me! The Raffle made over £300 profit for Charity, the Bar was run smoothly by the Carnival Committee and huge thanks are due to Robin Fookes, Angie Trunkfield, Catriona Smith, Kaye Crittall and Veronica Sargent for their help setting up, running bars and raffles and then clearing down. It's all quite a feat to get on, but definitely worth it when everyone has such a lovely time!! The presentation of Carnival donation cheques was well received, with a lot of love shown to Fiona Bowler and her Canine assistant Mr Whizz, who apparently should have been in bed by 8.45pm, but who was really having a marvellous time being with so many people! They picked up a cheque for £1000 for Canine Partners, and further donations for £750 and £600 were presented to 1st Ninfield Scouts and the Health and Wellbeing Group respectively.

The Village Awards were presented by Cllrs Jackie Langley and Gary Pharo; and the two winners were..

David Swales and Kaye Crittall.

The Roger Kent Memorial Award went to Ninfield Bonfire Society.

The Ninfield Parish Community Shield to Ninfield Neighbourhood Development Plan Steering Group.

The Raffle's £310 profit will be shared 50-50 between the Lost Chord Charity-providing music for people in Care Homes, living with Alzheimers & Dementia-and The Memorial Hall.

Congratulations to all... and many thanks again for the help and support for this unique village event.!

PARISH CHURCH

Ideas are being discussed as to how to re-establish our lovely St Mary's Church as the Village Hub that it used to be several hundred years ago. Times may have changed, but having such a beautiful, calm, proud building in the centre of the Village, so easy to get to, makes it the perfect meeting place,

for a coffee, a chat, a club meeting, a society session, an information gathering group... Do please pop in when you see the door open, make yourself known to our lovely Revd Paul Frostick, and maybe 2025 will be the start of St Mary's new chapter!

VE & VJ Days plus Remembrance Day.... Acts of Commemoration have certainly become a fixture in the Ninfield calendar, and don't forget 2025 will see the 80th Anniversary of the end of WW2. There will be national guidelines for the celebrations, including Lantern processions and lighting the Beacon. As always, we will be involved in this and we'll make sure the Village is registered with the Event organisers in London, and that Ninfield's contributions are of the best!!!

Dance Classes!!!

The fabulous Monday morning class, Movement 2 Music, 10am, for the older but still active person...!.. continues to gain support and we have 20 fantastic members who enjoy the exercise, and then coffee and biscuits and a chat afterwards. There are still a few more spaces to fill so Please get in touch and come and join us! Look out for notices and posts for extra details, or call me!!

Thanks so much to everyone for their interest and support as always! For local events, dance classes and entertainment - please contact me 07970650321, samanthaguard@btinternet.com
www.samantha-hughes-guard Facebook Sami Hughes-Guard
FB Ninfield Carnival Events.

A Huge Thank You! Yet again, the 1st Ninfield and Crowhurst Scout Group would like to thank all those that attended either wreath making class on the 2nd and 3rd of December. We had 57 guests attend and make stunning bespoke wreaths using a wide array of foliage and as many natural adornments as possible.

We were hugely grateful to the Friendly voices for coming and singing Christmas carols and making the atmosphere very festive. Guests enjoyed mulled wine, bubbles, mince pies and cheese in the evening, or delicious cakes, bakes and refreshments in the morning session.

Together with our stall crammed with home made goodies and our raffle we are incredibly delighted to announce we raised £1500 for the scout group. We would like to thank the amazing team of volunteers that make goodies for us, gather foliage etc, make bows, organise food, bookings and all. It's an event we thoroughly enjoy hosting and thank each and every guest for their continued support, helping us keep scouting affordable and exciting for all.

Veronica

Hairdresser
Salon and mobile
appointments available

Hair by
Kate
Salon based in Ninfield
07894 051 360

Barry & Co
SOLICITORS

WILL WRITING SERVICE

Usual fee per Will
£225 + VAT

Free Wills brochure available on request

Lasting Powers of Attorney

£470 + VAT

Tel: 01323 766370/768382

Bay Terrace Pevensey Bay East Sussex

**Woodside Acupuncture &
Massage Clinic**
Now open in Ninfield

University trained acupuncturist
Angela Wallis has over 10 years
experience treating problems including
Back, neck, knee, shoulder pain,
Poor sleep and low energy levels
Stress, anxiety and depression

01323 819157

www.woodsideacupuncture.co.uk



Simon Anderson The Cuckoos Nest Hooe
Professional Affordable Service
helpinghandhandyman76@gmail.com



**HOPE COTTAGE
FARM SHOP & TEAROOM**

Hooe Road Ninfield, TN33 9EL, 01424 892342

Breakfasts served all day
Lunches, specials, High Teas, cakes,
desserts
Roasts on a Sunday

Hampers, Gift Ideas & Vouchers

Daily 10.00am - 4.00pm



East Sussex Massage

Sarahjane Prince Cert. Ed. MSMA.MAR.

Appointments in **Dallington** and **Heathfield**

Sports Massage Zone face Lift
Aromatherapy Reflexology

07762576495

eastsussexmassage@yahoo.co.uk

Quinn's Carpentry

Bespoke carpentry to suit your needs

Tom Quinn
Carpenter and Joiner
20 years experience



07515 907210 tomquinn1984@gmail.com



20+ years experience in Plastering
Tacking Coving Screeding Rendering
For a professional and friendly service
in all aspects of plastering

Call 07776095159

Bourneplastering@gmx.co.uk

Hooe Village Community Group

Contact us:

Website:

hooevillagecommunitygroup.co.uk

Facebook: Hooe Village Community Group

Email: hooevcg@gmail.com

Chairman: Gary Durman

Treasurer: Peter Cosham

Secretary: Sally Durman

If you would like to receive news
and regular updates about our
forthcoming events
please email us your contact details

HVCG exists to
Encourage, Promote and Support
Village activities and charitable works



Future Coffee Morning Dates: 8th February: 8th March

January Coffee Morning: When we awoke to heavy frost and freezing temperatures, we thought that attendance at our January coffee morning would be low. How wrong we were! We welcomed over 60 people – they kept on coming. The atmosphere was fantastic, such an enjoyable morning.

Anne, assisted by her daughter Sarah, was ready bright and early with an ever-increasing offer of books and jigsaw puzzles. Just the thing for dark, cold evenings.

We were delighted to present a cheque to the value of £500 to
Bexhill Food Bank

This follows our donation to the Deaf Children's Society last month of £500. We know that our donations are always hugely appreciated, but none would be possible without **your** support. So, we would like to share their letter of thanks:



“I would like to thank you all so much for your fantastic donation to our society. A donation of £500 is so amazing, over 50% of our annual income and will open so many more opportunities to improve the lives of our deaf children. The opportunity to meet up with other deaf children and their families is all important – to know that there are other children with the same hearing loss and in some cases other disabilities.

In the coming year we are hoping to be able to provide sign language communication classes for the very youngest, pre school children and their families.

As a point of interest, the person who accepted our donation on behalf of the Society returned this month and brought her Grandfather, who once lived in Hooe. He enjoyed talking to people he remembered from the past and sharing interesting village stories.

We were thrilled last December to present a cheque to the value of £500 to The Deaf Children’s Association

Apologies for the Jumper!



David Formby

On 7th January St Oswald’s Church was full to capacity and the car park overflowing, with 17 vehicles parked in the approach lane, such was the huge turnout for the funeral out of respect for David Formby. David was a great friend to Hooe, he will be sorely missed. The initial idea for a Millennium Wood blossomed into reality when David took over, using his vast professional knowledge and skills to create it for the people of Hooe. David spent many happy hours working on the project, without him it may never have happened. He created a special place for residents to use for many years to come and we are truly grateful. How fitting it would be if the wood was renamed in his honour and a sign erected ‘The David Formby Millennium Wood’ Your thoughts on that idea please.

Road and Rural Issues

On Friday 10th January HVCG was delighted to welcome our MP, Dr Kieran Mullan to Hooe. A group of 14 residents spent an hour and a half with Kieran outlining the concerns and problems experienced in the village and chewed over possible solutions. We started our road safety campaign way back in 2007 but sadly, since then our problems have increased. The opening of the new road and the designation of the Top Road as a dispersal route has added to the weight and speed of traffic using the rural road. Some of the topics we raised with Kieran were speeding vehicles and speed limits, rat runs, heavy vehicles, unsocial driving, use by oversized heavy vehicles, the dangerous junction with the A.259 at The Lamb Inn, lack of clear diversion routes in the event of unexpected closure of the A259 as a result of accidents or road works. And of course, potholes and the general state of the road surfaces.

We all left the meeting with 'homework! Kieran has agreed to meet with us again in a few months to enable us to compare progress which we hope we will have been able to make.

Public Defibrillator awareness

By the time you read this we will have held our Public Defibrillator awareness morning, Saturday 18th January. Full report next month.

Annual Litter Pick

We will be arranging our Annual Litter Pick again in 2025, we hope the date will link to the National Campaign. Just as soon as the dates are released, we will let you know when we are out in force!

However, if you feel the urge to pick up litter in the meantime, we have picks which can be borrowed and will provide litter sacks for you to fill.

Notice Board at the top end of the village

What do the people of Hooe do when they are told something they need cannot be afforded? The same as they have always done since time began – provide it themselves!

Concern was raised about the lack of a notice board at the top end of the village. Sarah raised the concern; Dick constructed the Notice Board and Peter S painted and erected it. Job done to the delight of very satisfied residents. Thank you!

Would you like to get involved?

HVCG is always on the lookout for folk to join us. We have a lot of fun, it's not all work!! Why not give it a try? Just contact any of us

We would also encourage you to submit suggestions of your favourite worthwhile local charities/organisations for us to consider supporting.

Hooe Village Community Group, enjoying working together for the good of everyone.

I would like to personally apologise to Sami. I somehow managed to miss off part of her report in the Dec/Jan Parish News, on the Remembrance Service that was held in St. Mary's Church, Ninfield, on the Rec and then in the Methodist Hall. I know it was last November but I would like to repeat part of that missing report:

Nicki

"It was amazing to see St Mary's Church absolutely full to the rafters for the Service of Remembrance. Scouts, parents and friends joined both congregations, from the Methodist and Parish churches, and all appreciated Rev. Paul Frostick's commemorative service. It was also a great chance too for people to meet up again after the success of the Michaelmas Fayre. So many people had expressed interest in the Church and its history; some newer residents hadn't known the Church was there. But the idea is now being discussed as to how to re-establish our lovely Church as the Village Hub that it used to be several hundred years ago. Times may have changed, but having such a beautiful, calm, proud building in the centre of the Village, so easy to get to, makes it the perfect meeting place, for a coffee, a chat, a club meeting, a society session, an information gathering group. Do please pop in when you see the door open and maybe 2025 will be the start of St Mary's new chapter!"

LADIES BADMINTON and TABLE TENNIS

Monday afternoons from 1.30 - 3.30 there is Ladies Badminton and now, a new addition, table tennis. No need to book, just turn up and say hello, you will I be most welcome at Ninfield Memorial Hall

it's all very informal, no leagues or competition, just fun and friendship with exercise.

NINFIELD METHODIST CHURCH

Minister: Reverend Philip Wagstaff

Tel: 01424 550427

email: office@hbrmethodists.org.uk

website: hbrmethodists.org.uk

Sunday Services for February 2025:

2 nd	10.30 am	Café Worship for all the family with Julie Todd
9 th	10.30 am	Family Worship & Praise Service with Revd. Patricia Williams
16 th	10.30 am	Worship, Praise & Communion with Revd. Jonathan Todd
23 rd	10.30 am	Family Worship & Praise Service with David Hanson

Events for February 2025:

Fridays 10.00-11.30am Community Café including

7th 10.00-11.30am Book exchange in Hall

12th 2.30 – 4.00pm Christian Women's Fellowship

25th 2.15 – 4.30pm Time Together Tuesday

We welcome-in 2025 & all the new opportunities & challenges this will bring. We know that God is with us in all that we do.

We invite you to come along to any of our services or events. The Community café on Fridays continues to be very popular so perhaps put this in your diaries.

Our Sunday worship continues to be creative as we explore together our Christian Faith. It is suitable for all ages & on most Sundays we run activities for young people in our Hall. The children start off in Church & then go into Hall for their own fun. We always serve refreshments after Sunday services. Café Church is special when you also get breakfast!

Time Together Tuesdays starts again on February 25th. This group provides time for mums to chat, relax, share & support each other before school pick-up. Then there is still time for children to play together & have a snack after school.

We were pleased that our filled Shoeboxes were delivered to Bulgaria & Romania in December so very many thanks to everyone who donated, & Simon, from Computers for Chaities, for driving to these countries. We gave around 50 packed boxes which was excellent!

Please remember & pray for all that we are doing to share the love of God in our community.

Bible Bite

A short story from the Bible

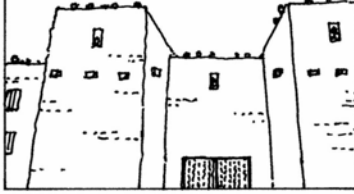
It can be read in the Bible in Joshua chapter 6 verses 1-27

Joshua led the Israelites across the river Jordan. They camped near the town of Jericho and prepared to fight.

The people in Jericho locked the town gates.



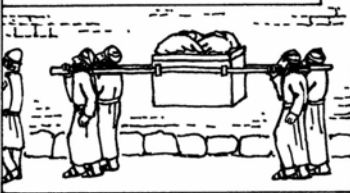
They thought they were safe.



God told Joshua what to do.



On the first day, the priests carried the sacred chest,



they blew trumpets, and walked round Jericho once.



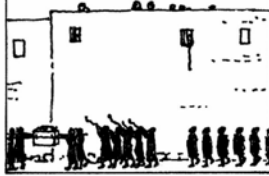
The army followed not saying a word.



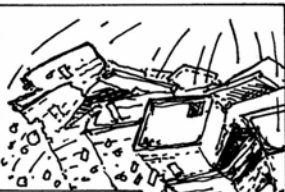
They did this for 6 days.



On the 7th day they walked round 7 times.



The army gave a victory shout!



The walls of Jericho collapsed.

The army rushed into the town and captured it.



Jericho was destroyed.

Directory of Groups & Clubs

NINFIELD BONFIRE SOCIETY Sarah Seymour 07809684488

NINFIELD BOWLS CLUB: Secretary: Mrs Val Smith, Bexhill 843436

NINFIELD CARNIVAL & SPORTS ASSOCIATION:

Samantha Guard, 893699 or 07970 650321

NINFIELD CRAFTING & KNITTING: Jane Dommersen 862428

NINFIELD AND DISTRICT ART SOCIETY: Fiona Stedman 01424 892418

NINFIELD FLOWER GROUP Jennifer Collett 892878 ninfieldflowers@gmail.com

NINFIELD HORTICULTURAL SOCIETY:

Show Organiser: Kaye Crittell, Stepping Stones, Lower Street, 892883

NINFIELD LOCAL HISTORY GROUP

Membership Sec. •Corinne Gibbons •892612 corinnemgibbons@gmail.com

NINFIELD MUDDY BOOTS Early Childhood Centre

Sunshine Room 01424 892 037. Snowdrop Cottage 01424 892 600.

NINFIELD STOOLBALL Emma Kehoe 07565 010647

NINFIELD VILLAGE ALLOTMENTS: Sue Thompson 892294

NINFIELD VILLAGE SOCIETY: Robin Goldsmith 892778

1st NINFIELD SCOUT GROUP

Group Scout Leader Glen Harrison gharrisonninfIELDScountsgsl@gmail.com

Explorer Scout Leader: Josh.explorers@gmail.com

Scout Leader: Elaine Gausden ninfieldscouts@gmail.com

Cub Scout leader: Tracey Harrison tracey.harrison67@gmail.com

Beaver Scout Leader Sandra Creasey• 07908 558721 ninfieldkaa@googlemail.com

Group Chairman: Rosemary Cooper

NINFIELD WORKING MEN'S CLUB: Robert Slater 07740 828715

DANCE & DRAMA CLUB: Samantha Guard, 893699 or 07970 650321

DARK SKIES GROUP Kaye Crittell 892883

THE FRIENDLY VOICES Kaye Crittell 892883

PILATES & YOGA Susan Trimmer 07977 872284

LITTLE STARS DANCE Kirsty Mills 07875 235398

HOOE BELL RINGERS : Simon Pattisson 845087

HOOE HISTORY GROUP: Chairman Heather Sinden 893422

HOOE & NINFIELD OPEN GROUP: Heather Sinden 893422

HOOE SPORTS CLUB Jay Skinner-Swain jay19942009@hotmail.co.uk or 07713 950161

HOOE VILLAGE ALLOTMENTS: Jane Warrener: 07548 528754

CHRISTIAN WOMEN'S FELLOWSHIP Pam Doodles, Catslide, Hooe 892329

1066 RINGERS (Hand Belleplates) Carole Ballard 01424 210980

STOOLBALL: Hooe Fixture Sec. Linda Smith, Holmes Farm, Whydown 845163

PARISH WHO'S WHO

PRIEST IN CHARGE OF NINFIELD AND HOOE Rev Paul Frostick,
18 The Ridings, Bexhill on Sea. East Sussex. TN39 5HU. 01424 218126.

PARISH CHURCH of St. MARY the VIRGIN, NINFIELD

Churchwardens: Mrs Catriona Mary Owen
After 4.00pm 225421

Secretary: Mrs Ann Ringrose

Treasurer:

PARISH CHURCH of St. OSWALD, HOOE

Churchwardens: Mr Jack Rist ☎892576
Mrs Janet Pattison ☎845087

Secretary: Mr John Fairclough

USEFUL CONTACTS IN THE VILLAGES

THE PARISH NEWS Email ninfieldhooenews@gmail.com 893326

NINFIELD PARISH COUNCIL

Clerk to the Council:

Jackie Scarff 07725 843505 clerk@ninfieldpc.co.uk

HOOE PARISH COUNCIL

Clerk to the Council:

Jane Warrener: 07548 528754 clerk@hooe-pc.gov.uk

MEMORIAL HALL

Booking Secretary: EMAIL ninfieldmemorialhall@gmail.com

HOOE VILLAGE HALL

Bookings Jane Warrener: 07548 528754 clerk@hooe-pc.gov.uk

METHODIST CHURCH HALL

Booking Secretary: Mr David Swales 07989 729123

C of E PRIMARY SCHOOL 892486

DOCTORS The Surgery, High Street, Ninfield 892569

NINFIELD STORES, Lower Street, Ninfield 892281